



#### NORTH APPROACH

Approach from North towards entry path along East facade



#### NETBALL/TENNIS CHANGE

Viewed from courts further North/East



#### PAVILION/BREEZEWAY

Viewed from courts further South/East



#### PAVILION ENTRY

Viewed from East



#### EAST ELEVATION

Viewed towards Community Room and Entry from South/East

**brazel  
haley  
maggs  
architects**

(T): 03 9319 1000  
info@bhma.com.au  
67 Rose Street  
Essendon VIC 3040  
www.bhma.com.au

Brazel Haley Maggs  
Architects Pty Ltd  
ABM: 33 056 162 068

**PROJECT:** NEW BALLAN SPORTS PAVILION FOR  
MOORABOOL SHIRE COUNCIL

**DRAWING:** SCHEMATIC RENDERINGS

**FILE:**

**DATE:**  
Aug 2021

**SCALE**  
NTS

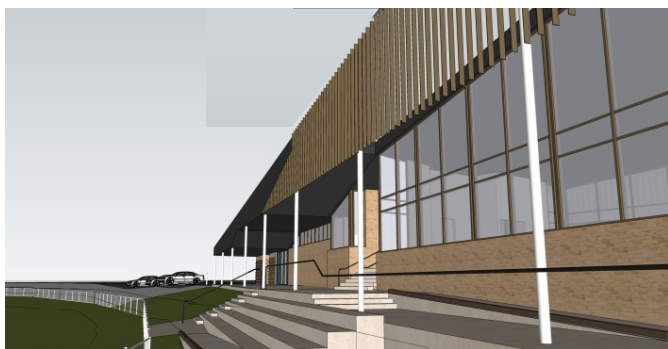
**DRAWN**  
EW/AJB

**2107  
SK\_R1A**



## WEST ELEVATION

Viewed from playing oval



## WEST/OUTER

View along west facade from external serveries towards North



## BREEZEWAY

Viewed from East



## SOUTH/WEST ASPECT

Viewed towards Changerooms and Pavilion from South

**brazel  
haley  
maggs  
architects**

(T): 03 9319 1000  
info@bhma.com.au  
67 Rose Street  
Essendon VIC 3040  
www.bhma.com.au

Brazel Haley Maggs  
Architects Pty Ltd  
ABM: 33 056 162 068

**PROJECT:** NEW BALLAN SPORTS PAVILION FOR  
MOORABOOL SHIRE COUNCIL

**DRAWING:** SCHEMATIC RENDERERS

**FILE:**

**DATE:**  
Aug 2021

**SCALE:**  
NTS

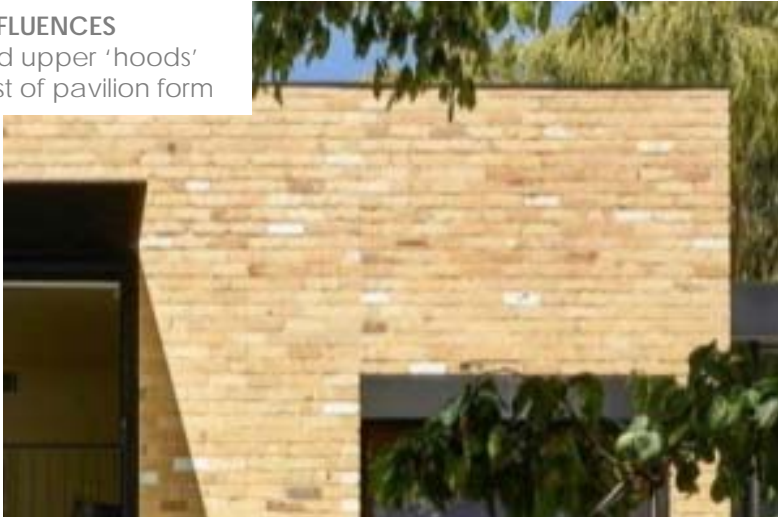
**DRAWN:**  
EW/AJB

**2107  
SK\_R2A**





**ROOF FORM INFLUENCES**  
Dark metal clad upper 'hoods' as crisp signpost of pavilion form



**EXTERNAL MATERIAL INFLUENCES**  
Recycled cream bricks, struck flush/rough, adds warmth and texture in a sustainable and economical way, coupled with sharp detailing, feature brickwork and materials;



**KEY GLAZING TREATMENTS**  
Bronze Anodized window frames and similar material to upper walls;  
  
Feature glazing strips to Community as signpost;  
  
Tall glazing to Community Room for improved aspect to field and natural light (passive solar)



brazel  
haley  
maggs  
architects

(T): 03 9319 1000  
info@bhma.com.au  
67 Rose Street  
Essendon VIC 3040  
www.bhma.com.au  
  
Brazel Haley Maggs  
Architects Pty Ltd  
ABM: 33 056 162 068

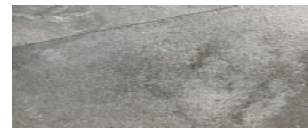
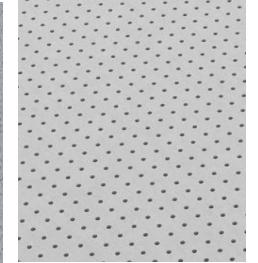
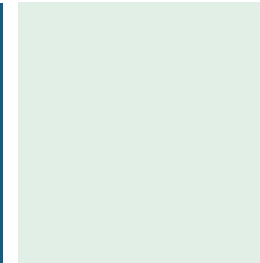
PROJECT:	NEW BALLAN SPORTS PAVILION FOR MOORABOOL SHIRE COUNCIL		
DRAWING:	SCHEMATIC COLLAGE	FILE:	
DATE:	SCALE	DRAWN	2107
July 2021	NTS	EW/AJB	SK_R3





#### ENTRY FOYER FINISHES

Dark ceiling, warm timber lining, stone floor tiles, walk-off carpet



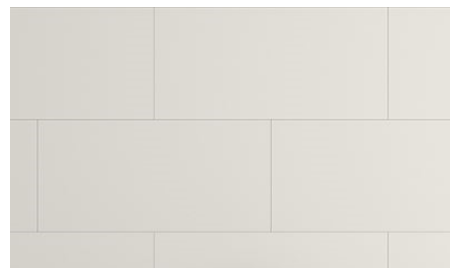
#### SOCIAL ROOM FINISHES

Grey toned carpet tiles, stone floor tiles, aquamarine panels/walls for display, warm timber paneling to Kiosk surround, dark grey composite stone benchtop to Served, white acoustic ceiling



#### CHANGE ROOM FINISHES

Flake vinyl floor, bright wall vinyl, aquamarine and dark grey toilet partition, white wall tiles



**brazel  
haley  
maggs  
architects**

(T): 03 9319 1000  
info@bhma.com.au  
67 Rose Street  
Essendon VIC 3040  
www.bhma.com.au

Brazel Haley Maggs  
Architects Pty Ltd  
ABN: 33 056 162 068

**PROJECT:** NEW BALLAN SPORTS PAVILION FOR MOORABOOL SHIRE COUNCIL

**DRAWING:** INTERNAL FINISHES

**FILE:**

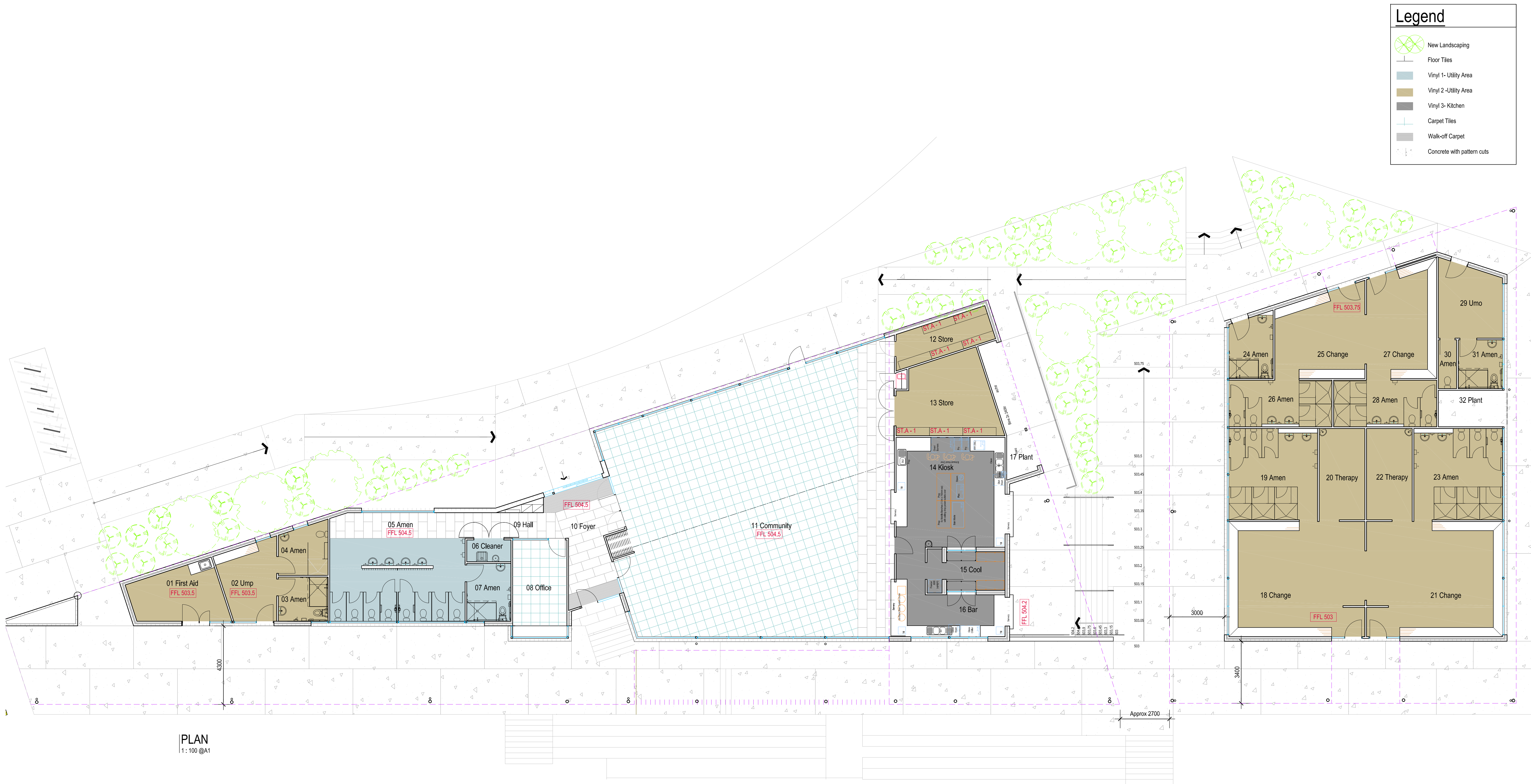
**DATE:**  
Sept 2021

**SCALE:**  
NTS

**DRAWN:**  
KT/AJB

**2107  
DD\_R3**





PRELIMINARY ISSUE  
17 SEPT 21

brazel  
haley  
maggs  
architects

(T): 03 9319 1000  
info@bhma.com.au  
67 Rose Street  
Essendon VIC 3040  
www.bhma.com.au

Brazel Haley Maggs  
Architects Pty Ltd  
ABN: 23 006 162 068

**PROJECT:**  
NEW SPORTS PAVILION AT BRR RESERVE,  
BALLAN FOR MOORABOOL SHIRE

**DRAWING:**  
PLAN

**DRW: CHK: DATE: SCALE:**  
AJB KT AUG 2021 As shown @ A1

**DWG:**  
2107-DD03