

# The Bacchus Marsh Avenue of Honour

## MANAGEMENT STRATEGY 2023



**Manage.  
Conserve.  
Enhance.**



Acknowledgement of Country

Council respectfully acknowledges the Traditional Owners of the land which includes the Wurundjeri Woi Wurrung, Wadawurrung and Dja Dja Wurrung people. We pay our respects to the Elders past, present and emerging.



Acknowledgements

This document has been prepared by Moorabool Shire Council in conjunction with the following:

- Cameron Ryder**  
Ryder Arboriculture & Environment
- Craig Lockens**  
Nuleaf Tree Services
- Annabel Neylon**  
Plan Heritage

The assistance and/or information from the following groups or organisations is also recognised:

- Heritage Victoria
- The Bacchus Marsh RSL Sub Branch
- Bacchus Marsh Historical Society

The photographs contained within this report were sourced from varying groups and organisations.



Contents

<b>Introduction</b>	<b>4</b>	<b>The Action Plan</b>	<b>23</b>
Overview and History	5	Action Plan	24
The Avenue	5	<b>References</b>	<b>26</b>
<b>The vision for the Avenue</b>	<b>13</b>	<b>Appendicies</b>	<b>28</b>
Vision	14	Appendix 1: Article (The Bacchus Marsh Express)	28
Objectives	14	Appendix 2: Plaque Types & Register of Plaques	33
<b>The current environment</b>	<b>16</b>		
Management & Maintenance Responsibilities	17		
Legislative & Planning Framework	17		
Victorian Heritage Register	18		
Moorabool Planning Scheme	19		
Issues & Challenges	20		







# Executive Summary

This Management Strategy covers the Bacchus Marsh Avenue of Honour consisting of:



40

sites between Pearce and Fiskin Streets dating to the 1880s (the western approach)



281

sites between Pearce Street and the flag poles dating to 1918 (the dedicated avenue)



39

sites between the flag poles and the Lerderderg River dating to the 1960s (the eastern approach)

The Bacchus Marsh Avenue of Honour (BMAOH) is of historical, aesthetic and scientific significance and is listed on the Victorian Heritage Register.

A detailed assessment was made of the various issues that may affect the heritage significance of the avenue; focussing on the integrity of the Avenue; the health and longevity of the trees, future climate predictions, the critical connection between the trees and individual service persons, infrastructure and development conflicts and ongoing maintenance regimes.

The objectives are to ensure the Avenue of Honour is effectively managed, conserved and enhanced in perpetuity as a living memorial, commemorating the soldiers of the Bacchus Marsh district.

The strategy will be reviewed as required, with the associated Bacchus Marsh Avenue of Honour Preservation Plan being reviewed every five years.



# Introduction



## Overview and History

The Bacchus Marsh Avenue of Honour was planted on Saturday, 10 August 1918. The idea to plant the avenue had only started a few weeks before, but public sentiment grew rapidly and on that morning a crowd of more than 1,000 attended the ceremony.

Workers were organised to dig 200 holes during the morning, ready for simultaneous planting scheduled at 2.45pm (heralded by a bugle call), followed by a formal ceremony at 3.30pm (Bacchus Marsh Express 10 August 1918, p 2). On the day, 30 workers from the Darley Firebrick Company, (which had closed down for the event) had 100 holes dug shortly after commencing at 8.00am.

A total of 281 trees were planted, extending from the existing tree avenue at the eastern end of town eastwards along the Melbourne-Ballarat Road to a point near the Lerderderg River. Each tree commemorates an individual soldier from the Bacchus Marsh district and was planted by a relative or friend of the soldier.

Trees were protected by timber guards made from pickets that appear to have been nearly 2m tall. A copper name plate with the soldier's name, rank and unit was affixed to each guard. The plaques were placed alphabetically and numbered, with the odd numbers on the north side of the road and the even numbers on the south. This allowed the members of each family to be kept together (Bacchus Marsh Express, 17 August 1918, p3).

It is important to recognise that although Council stood as guarantor for the costs of the Avenue, the vast majority of the cost was borne directly by the community. At the time of printing the Bacchus Marsh

Express (17 August 1918) stated that 232 of the 281 trees had been sponsored by the community.

## The Avenue

The Bacchus Marsh Avenue is located on the Bacchus Marsh Road, from Fiskin Street to the Lerderderg River. It extends for a length of about 3.3 kilometres, is dominated by Dutch Elms, and consists of three distinct sections (Figure 1):

### The Western Approach

Between Fiskin Street and Pearce Street, this approach is made up of 40 sites, originally planted circa 1880s

### The 'Dedicated' Avenue of Honour

Between Pearce Street and the flag poles (approximately 300m prior to the Lerderderg River), this section is made up of 281 sites, originally planted in 1918. Within this section, on each tree is a plaque in recognition of soldiers from the Bacchus Marsh district. The Avenue of Honour is listed on the Victorian Heritage Register.

### The Eastern Approach

Between the flag poles and the Lerderderg River, this approach is made up of 39 sites, originally planted circa 1960s





FIGURE 1: The Bacchus Marsh Avenue (Western Approach, Avenue of Honour and Eastern Approach)



FIGURE 2: Tree removal evident from 1966 aerial photo (Source: Department of Sustainability and Environment, annotated image taken from Lovell Chen 2010).

An aerial photo from 1966 shows a section of the Avenue of Honour where eight trees had been removed, presumably as part of road realignment works (Figure 2). The trees replanted in this area and another section on the southern side of the road were Wych Elm (*Ulmus glabra*) rather than Dutch Elm.

The Avenue of Honour was part of the Western Highway till 1972 when the Bacchus Marsh Bypass was completed. The alignment of the new Western

Freeway was to the north of the town. The Country Roads Board was responsible for the management of the Avenue of Honour during this period and in 1972 the road was re-declared as a Main Road (Bacchus Marsh Road). The Council assumed day to day management from that time and still provides management as an agent for the Department of Transport. Land use along the Avenue of Honour is residential at the western end, slowly changing to rural along its length towards the freeway.

## The Western Approach

The western approach to the dedicated avenue includes 40 sites to the west of Pearce Street. The trees on the southern side extend to Fiskin Street, while on the northern side the trees extend only to Crook Street. The trees are mainly Dutch Elms (*Ulmus xhollandica* 'Hollandica') planted c.1885 forming part of an earlier planting of elms along Main Street (Moorabool Shire Council 2004). These trees are some of the earliest elm plantings in Victoria.

Trees in the Western Approach are identified by the prefix 'W' and are numbered consecutively in a westerly direction from Pearce Street (starting from number 1 on the northern side).

## The Dedicated Avenue

The Avenue of Honour includes 281 sites between Pearce Street and existing flag poles (Figure 3). The trees are primarily Dutch Elms (*Ulmus xhollandica* and *Ulmus xhollandica* 'Vegeta'), although there are also a number of replacement trees including Wych Elm *Ulmus glabra*, Variegated Elm *Ulmus minor* 'Variegata' and Desert Ash *Fraxinus oxycarpa*. Replacement planting of the true to type Dutch Elm clones commenced in approximately 2004.

The Avenue of Honour trees are numbered consecutively in an easterly direction from Pearce Street, starting from number 1 on the northern side. Trees located on the north side of the road are identified with a prefix 'N' and those of the south side with a prefix 'S'.



FIGURE 3: The dedicated Avenue of Honour (eastern end, looking west).



## The Eastern Approach

The Eastern Approach includes 39 sites between the flag poles and the Lerderberg River. The trees in this section of the Avenue are primarily Dutch Elm *Ulmus xhollandica*; however, Desert Ash and River Rd Gum also exist. The trees are relatively young and may have been planted as early as the mid-1960s (Moorabool Shire Council 2004).

Trees in the Eastern Approach are numbered consecutively with the prefix 'E' from the flag poles (the eastern end of the Avenue of Honour), starting from number 1 on the northern side. Several remnant River Red Gums *Eucalyptus camaldulensis* and mature Ash trees are located throughout this section and have also been assessed. In total, 39 trees comprise the Eastern Approach.



## Names and Plaques

### 1918 Name Plates

The Bacchus Marsh Express article of 17 August 1918 provides the basis of our understanding of the nature of the original name plates and the sequence of dedications (Moorabool Shire Council 2004). The article lists the name of the serviceperson to which each tree was dedicated; however, a blank entry (no name) was recorded for five trees (S8, N91, S134, N157 and N181). Each tree was originally protected by timber guards with attached copper embossed name plaques mounted on a wooden block giving the soldier's name, rank and battalion details (Victorian Heritage Register H2238).

Figure 4 is a photograph taken of the planting ceremony from the verandah of the Old Wool Pack Hotel. It is likely that the photograph is of the ceremony prior to the planting of the honour tree (N145) by Major Baird. Major Baird MLA, came from Ballarat to pay homage to his comrades in arms and at the invitation of the Shire President Brown. The photograph also shows the tree guard already in position (Moorabool Shire Council 2004).



FIGURE 4: Ceremony of 10 August 1918 (Source: annotated image taken from Moorabool Shire Council 2004).

*There are relatively few original plates remaining, although a number were recovered from the base of the trees during the preparation of the 2004 Strategic Management Plan.*

### Post 1918

The type and location of the plaques have changed over time. As the guards collapsed and timber frames were removed many of the name plaques were either lost or attached to the trees (Figure 5, Victorian Heritage Register H2238).

In the early 1960s the Country Roads Board replanted some new trees after road alignment work and installed new green bevel-edged hardwood name plaques on white hardwood posts. In the late 1960s and 1970s missing name plaques were replaced with embossed

aluminium name plaques on hardwood backing plaques. By the late 1980s cast aluminium name plaques were being attached to the trees. In the late 1990s, cast bronze name plaques were mounted on the trees. The 6 different types of plaque and mounting combinations that had been used for the Avenue of Honour trees is detailed in Appendix 2.





Sgt G. ALLEN  
1914-18 A.I.F.

3462  
PTE A. DURWARD  
46TH. BTN.

CATHERINE ZENNER  
1863.

1200  
PTE. H. WAT  
7TH. BTN.

541  
CPL W. J. VALLENCE M.M.  
8th. Light Horse

1581  
PTE. J. W. H. USHER  
27TH. BTN.

PTE. 3798  
W. A. EDGERTON  
46TH. BTN.

192  
PTE J. EMME  
6th. Btn. KILLED IN ACTION 15

PTE. 3620  
K. F. ANDERSON  
59 BTN.

3282  
PTE. W. J. TODD  
1st PIONEERS

5371  
PTE. J. C. SMYTH  
24TH BATTALION

4000  
C. S. M. W. BLAKE  
A.L. RAILWAYS

830  
Pte G. F. BENCE  
38th Btn.

SISTER  
KATHLEEN ROGERS  
A.A.N.S.

959  
PTE W. A. DREVER  
8th. Btn. KILLED IN ACTION

PTE M. G. SMITH  
8th. Btn. KILLED IN ACTION

Leut. E. J. RYAN  
59th. Btn.

PTE R. RICHARDS  
1914-18 A.I.F.

CPL. 120  
G. G. PATERSON  
1ST. DIV. SIGS. M.M.

2993  
Far. J. CARDELL  
15th F. C. Engineers

PTE E. HEATH  
1939-45. A.I.F.

57417  
W. J. H. ALLAN  
4TH. E. G. S. R.

13950  
Pte T. L. HAWKINS  
10 2nd L.H.F.A.

PTE. 3123  
J. H. CAMPBELL  
60TH. BTN. K-1-A 26.9.17

17046  
SPR. P. MOFFAT  
3RD DIV. SIG. COY.

ANNE L. MYER  
1838.



## 2010 Refurbishment

The 2004 plan highlighted that many of the name plates were no longer attached in the original alphabetical sequence and over time, changes to spelling of names had occurred. Further research to confirm these details was recommended.

This work was completed in 2009 by checking the details in The Bacchus Marsh Express newspaper article against the names in the National Archive of Australia (which holds the service records of all ANZACs who served). The soldiers' names on the plaques are consistent with the details recorded by The Bacchus Marsh Express, despite some misspelt surnames and incorrect initials.

It was recommended that the order of the name plates reflect that originally published in the Bacchus Marsh Express (date). To ensure consistency among the name plates, it was recommended that the cast aluminium name plate with raised lettering become the standard, replacing all others. Plaques were to be mounted on

tree trunks at a height of 1.8m from ground level and on to stakes for newly planted trees until they are large enough to support a plaque fixed to the trunk.

A restoration and renewal project was undertaken on the name plates in 2009/10. The 84 remaining original plaques are in varying condition and are held in storage by Moorabool Shire Council. In 2018, it was agreed to handover the remnant plaques to the Bacchus Marsh RSL.

The decision to relocate name plates in accordance with the sequence documented in The Bacchus Marsh Express article is considered sound despite it being an incomplete record. The changes that are known to have occurred have been documented and the report and spreadsheet are retained as a record of this latest name plate relocation.

A summary of the name plate types and register of plate details and sequence form Appendix 2 to this plan.

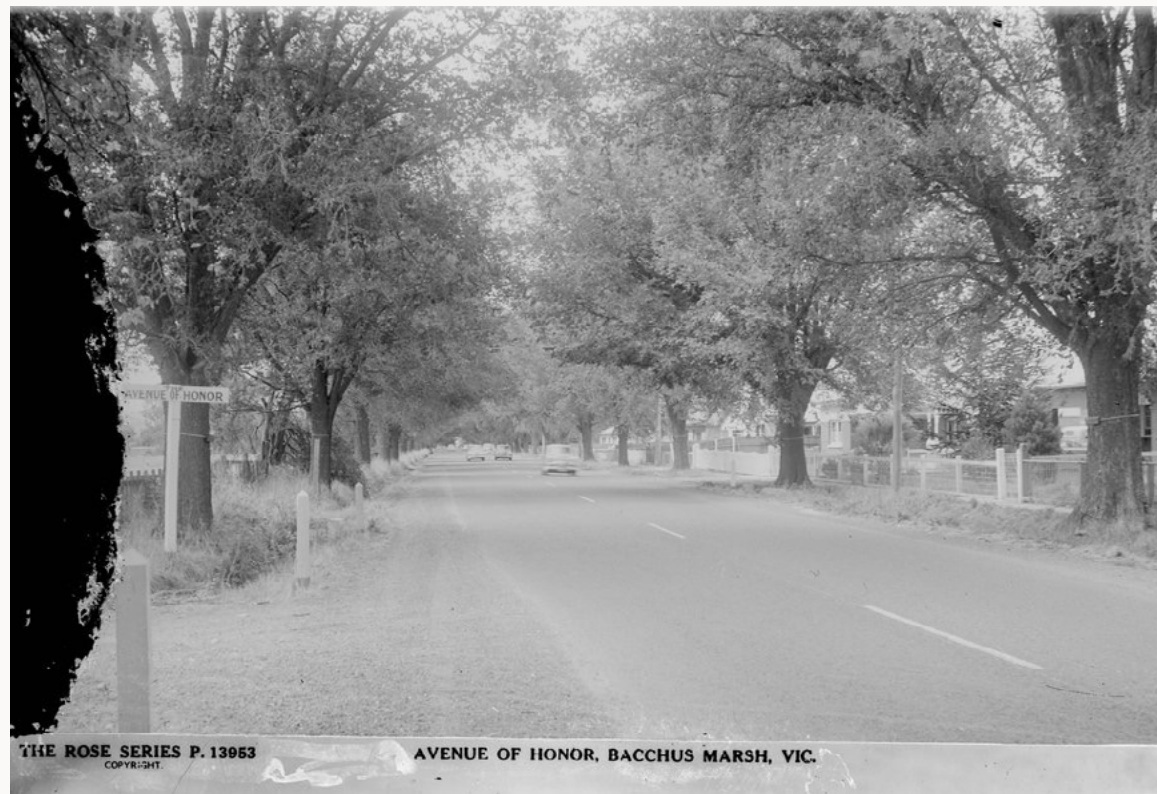


FIGURE 5: The plaques are attached to the trees (Rose Stereograph Company c1920-1954).

# The Vision for the Avenue





Vision

The vision for the Bacchus Marsh Avenue of Honour is to have a tree dedicated to each of the fallen service personnel from WW1 in perpetuity. It will be an ongoing tribute, providing a significant landscape and tree canopy cover along Bacchus Marsh Road. It is intended that the original vision for the Avenue will be maintained as far as is reasonably practicable.



Objectives

The Avenue of Honour Management Plan aims to achieve the following objectives:



To maintain, enhance and protect the Avenue of Honour including the Western and Eastern approaches



To promote the recognition of war time and peace time sacrifices by Bacchus Marsh service personnel



To advocate the importance of Avenues of Honour as a unique way to remember service personnel



To provide a tree as a memorial for each service person in perpetuity



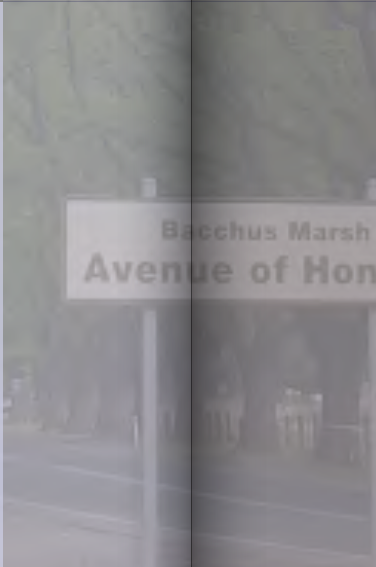
To ensure there is an Avenue into the future through managed tree replacements



Maintain the trees to manage and mitigate risk to users of the road and surrounds



To provide advice to Council, The Department of Transport, Heritage Victoria and other agencies on matters relevant to the proper Custodianship of the Avenue.





# The Current Environment



## Management and Maintenance Responsibilities

The Avenue of Honour is currently maintained to a high level by Moorabool Shire Council. The more intensive and frequent arboricultural management from the Moorabool Shire Council over the last decade or so has reduced the risk associated with the trees.

The management of the heritage listed landscape is complex and requires a significant input of staff resources.

## Legislative and Planning Framework

The dedicated Avenue of Honour is within a Transport Zone, Schedule 2 (TRZ2) of the Moorabool Planning Scheme. Adjacent to the Avenue, the private landholdings are subject to Design and Development Overlay, Schedule 2 (DDO2).

Where the Lerderderg River is close to the Avenue, Environmental Significance Overlay, Schedule 2 (ESO2) and Schedule 8 (ESO8) apply. Neither ESO2 or ESO8 provide protections for the Avenue trees; however, may be triggered if other works are planned. Similarly, areas are also listed as 'areas of cultural heritage sensitivity' under the Aboriginal Heritage Regulations 2018.

Adjacent land to the Woolpack Road intersection is subject to a Public Acquisition Overlay (PAO1).

The dedicated avenue of honour has the following protections:

- It is listed on the Victorian Heritage Register (VHR2238). There are standing permit exemptions for the Avenue of Honour, endorsed by the Heritage Council of Victoria including:

- Minor works that will not affect the heritage significance of the area.
- Management and maintenance of trees including formative and remedial pruning, removal of deadwood, pest and disease control, cabling, mowing, weed control and mulching.
- Management of trees in accordance with AS 4373-2007 *Pruning of Amenity Trees*.
- In the event of loss or removal of trees, replanting with Dutch elms (*Ulmus X hollandica*) or Huntington elms (*Ulmus X hollandica* 'Vegeta') to maintain the landscape character identified in the statement of significance.
- Removal of tree seedlings and suckers but excluding herbicide use.
- Repairs, conservation and maintenance to structures and hard landscape elements, memorial name plaques, asphalt and gravel paths, stone and concrete edging, fences and gates.
- It has a local council Heritage Overlay (HO47 and HO204).
  - Tree controls do not apply to HO47
  - Tree controls do apply to HO204



## Victorian Heritage Register

The Victorian Heritage Register provides good protection for the 281 trees that comprise the Dedicated Avenue of Honour (VHR No. H2238). The extent of registration includes the road reserve and 20m into the adjoining land on both sides (Figure 6) in order to encompass the Tree Protection Zone area (AS4970-2009). Continued liaison with these landowners and education on the requirements of trees is important to extend their longevity.

As noted in the VHR registration, a permit is required to undertake specific works within the area covered and to the Avenue of Honour trees. The permits aim to ensure the trees are protected, the landscape character is maintained, the community is notified of changes and tree removals and a record of changes is kept.

A permit is required for:

- Any works not exempt or subject to exemption from the Executive Director of Heritage Victoria. If clarification is required, contact the permits coordinator at Heritage Victoria
- Works associated with water, gas, power, sewer or similar services that occur within the road reserve and 20m into the adjoining land on either side.
- Other than those buildings and works specifically exempt, the demolition of an existing structure and any new buildings, structures or works (including vehicle crossovers) that are proposed within the road reserve or 20m into the adjoining land on either side.
- Any changes to the name plaques other than repairs, conservation and maintenance.

The VHR listing for the dedicated (281 trees from Pearce Street to the Flagpoles) Avenue of Honour means that Heritage Victoria rather than Moorabool Shire Council is the responsible authority in relation to permits for relevant works. Trees at the eastern and western approach are covered by HO204 of the Moorabool Planning Scheme and are subsequently the responsible authority



FIGURE 6: Extent of Victorian Heritage Register.

## Moorabool Planning Scheme

The Bacchus Marsh Avenue of Honour is listed on the Moorabool Planning Scheme (Heritage Overlay) as HO47 and HO204 (Figure 7).

- HO47 covers the dedicated (281 trees from Pearce Street to the Flagpoles) Avenue of Honour
- HO204 covers the Eastern and Western Approach. The overlay does not extend to the west from Crook Street to Fiskin Street (Tree W42 and 3 vacant sites).

It should be noted that although the controls segregate the avenue, Council adopts a wholistic approach to the management and conservation of the Avenue of Honour. Both overlays cover an approximately 20m wide tract of land along each side of Bacchus Marsh Road.

Tree controls do not apply for HO47 (where VHR H2238 applies); however, they do apply for areas covered by HO204 which covers the eastern and western approach. Under the overlay (HO204), a permit is required to:

- Remove, destroy or lop (prune) a tree if the schedule to this overlay specifies the heritage place as one where tree controls apply. This does not apply:
  - To any action which is necessary to keep the whole or any part of a tree clear of an electric line provided the action is carried out in accordance with a code of practice prepared under Section 86 of the Electricity Safety Act 1998.
  - If the tree presents an immediate risk of personal injury or damage to property.

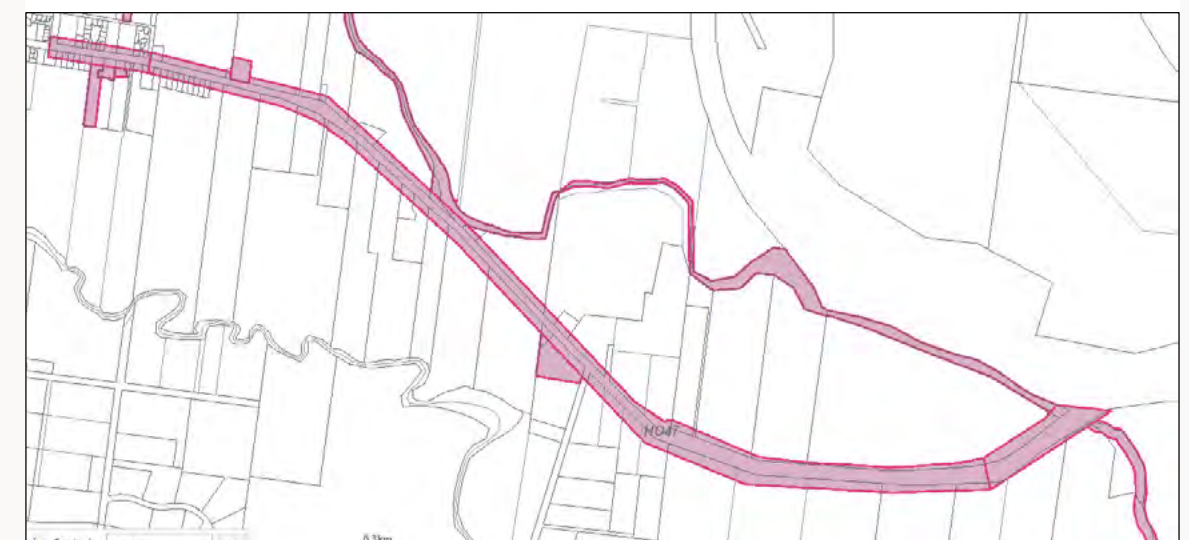


FIGURE 7: Extent of local Heritage Overlay (HO47 and HO204).



## Permit Requirements

- For trees within the dedicated Avenue of Honour (281 trees from Pearce Street to the Flagpoles), Heritage Victoria is the responsible authority for the issuing of permits. General tree maintenance can be completed under the exemptions.
- For trees at the eastern and western approaches, Moorabool Shire Council is the responsible authority. A permit is required to remove, destroy or lop (prune) a tree as well as controlling buildings and works. Contact council planning department if any works are proposed within the areas marked as HO204.

## Issues & Challenges

There are a number issues that face the trees' longevity and viability including:

- **Biotic issues**
  - Elm Leaf Beetle
  - Slime Flux
  - Dutch Elm Disease and Elm Bark Beetle
  - Decay fungi
- **Abiotic issues**
  - Installation of infrastructure along the Avenue
  - Informal car parking
  - Utility installation and maintenance
  - Farming practices
  - Road safety

These are all discussed in further detail in The Bacchus Marsh Avenue of Honour Preservation Plan, under Tree Health Considerations.

## Eastern Approach – Specific Issues

In the 1960s, an avenue of Elms was continued from the flagpoles towards the Lerderderg River. This area has a mixture of Elms, Ash and River Red Gums, many of which are along the roadside and in adjacent paddocks. Car parking and interpretative signage has been constructed at the Rupert Vance Moon Reserve adjacent to the Lerderderg River.

### ISSUES INCLUDE:

- Lack of uniformity, due to the presence of River Red Gum and Desert Ash

## The Dedicated Avenue – Specific Issues

Roadside fruit stalls are a feature on both sides of the road within The Dedicated Avenue. Adjoining land use is open farmland, orchards, farm buildings, light industrial buildings including cool-stores and an abattoir.

### ISSUES INCLUDE:

- High target occupancy under the Avenue of Honour trees (parked cars and visitors to the fruits stalls and cafes) and potential branch or tree failure
- Unregulated vehicular crossovers detracting from the visual quality of the Avenue
- The number of advertising signs detracting from the visual quality of the Avenue
- Soil compaction of tree root zones from both formal and informal car parking
- Difficulties with establishment of replacement trees in high vehicular traffic areas

- Large number of driveways, car parking and storage yards under the tree canopies
- Damage to trees due to vehicle impacts (in particular the tree on the south-east corner of the Woolpack Road intersection)
- Road safety at Woolpack Road intersection
- Impacts from intensive horticultural practice within Tree Protection Zones
- Compacted internal laneways adjacent to the Avenue of Honour within tree root zones
- Frequent cultivation of the farmland likely to cause tree root damage
- Senescing tree stock
- Replacement trees which have been added to the Avenue which are not consistent with the desired species

## Western Approach – Specific Issues

The Western Approach comprises older residential areas on the north and south side of the road. Although not State heritage listed, given the age and size of these trees, they have local heritage value.

### ISSUES INCLUDE:

- Proportion of vacant sites and insufficient space for replanting
- Building redevelopment occurring in this zone
- Current damage to trees from car parking, driveway crossings and installation of utilities
- Conflict between trees and infrastructure (mainly kerbs and footpaths)
- Soil compaction of root zones from informal car parking

## Aging Trees and Natural Senescence

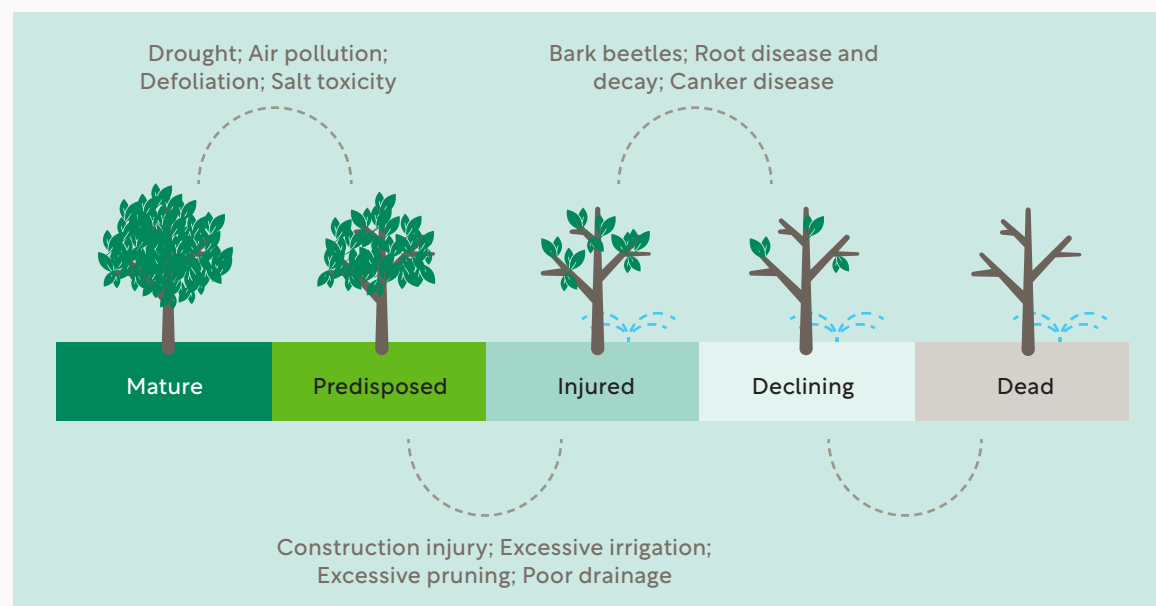
Planted in 1918, the original avenue trees are now over 105 years old, and those within the Western Approach, planted c.1880 are approaching approximately 140 years. Trees have a finite lifespan and the original plantings are nearing the end of their natural lives.

Useful life spans of Dutch Elms in urbanised areas of Australia are not known with any degree of certainty; however, it is expected that 100-150 years should be achievable if well maintained (Spencer, Hawker and Lumley 1991). Two of 'Arthurs Elms' at the Royal Botanic Gardens in Melbourne, thought to be the oldest Elms in Australia, are now 170 years old. Another significant elm avenue is located in Camperdown. Also recorded on the VHR (H0647), the original plantings date back to 1876 and are in excess of 140 years old.

While the growing conditions for the Avenue of Honour trees are good, the level of vehicle and pedestrian traffic under the canopies provides a challenge for safely managing these mature trees in the landscape as they age.

While it is not known when the last of the 1918 Avenue of Honour trees will need to be removed, it will probably be within the next 20-30 years. As the tree population continues to age and senesce, the trees will become more likely to suffer failures and become increasingly difficult to manage. As trees become over-mature and stressed, they eventually enter a tree mortality spiral (Figure 8).





**FIGURE 8:** The mortality spiral (Harris Clark & Matheny 1999).

A balanced approach in terms of tree retention and replacement is required for the Avenue of Honour. Removal of any of these trees will be difficult for the local community; however, decisions on replacements cannot continually be deferred to future generations (Hitchmough 1994). Timely replacement is important to maintain canopy cover and the aesthetic significance of the landscape. Avenue trees should not be removed prematurely nor is it acceptable to maintain them in the landscape at all costs. Tree removal decisions need to balance risk, tree maintenance budgets and aesthetic benefits.

Replacement planting is a required aspect of managing the landscape. This process has already started, with approximately 66 trees planted since commencement of the replacement program in July 2008. The development and implementation of a preservation strategy is important to minimise the impact of large-scale tree removal.

### Climate change

Climate change is likely to be a considerable challenge for re-establishing a mature Avenue of Honour in the coming decades. Bacchus Marsh is located within the Port Phillip and Westernport region. The future climate within this region is expected to be hotter and drier over coming decades.

### Current issues with name plates

There are currently some issues with the existing plaques including occasional theft, vandalism, damage, issues relating to accuracy of information, and location and storage of historic plaques.

The establishment of an Advisory Committee of Council to assist in the management of the Avenue of Honour may be able to facilitate minor corrections.

### Online Resources

It is clear that the local community values the Avenue of Honour. A detailed, interactive website has been developed by one local community member with a strong interest in the Bacchus Marsh Avenue of Honour ([bacchusmarshavenueofhonour.org.au](http://bacchusmarshavenueofhonour.org.au)). This and the Great War Centenary Committee website ([bmwgcc.com](http://bmwgcc.com)) are both valuable sources of information for people interested to learn more about the Avenue of Honour. Opportunities exist to strengthen and integrate these online resources.

The Avenue of Honour is listed amongst all other known avenues at the Treenet Avenues of Honour website and the Virtual war Memorial

- Treenet Avenues of Honour [treenet.org/about-us/avenues-of-honour](http://treenet.org/about-us/avenues-of-honour)
- Virtual War Memorial [vwma.org.au/explore/memorials](http://vwma.org.au/explore/memorials)

# The Action Plan





## Action Plan

Section	What	Service Unit	Timing	Resourcing
<b>Western approach</b>	Review current civil infrastructure layout to consider pedestrian access, drainage and kerb, parking, existing trees and vacant sites.	Engineering Services (with Parks & Gardens, and Strategic Planning)	Years 2 – 4	Existing operational budget
<b>All sections</b>	Investigate the feasibility of constructing a walking trail along Bacchus Marsh Road, from the existing footpath termination, to RV Moon Reserve	Engineering Services (with Parks & Gardens, and Strategic Planning)	Years 2 – 4	Existing operational budget
<b>All sections</b>	Establish a program of tree propagation from bud material collected from the existing Avenue of Honour trees, ensuring all replacement trees are true to type and have a connection to the original trees.	Parks & Gardens	Ongoing	Existing operational budget
<b>All sections</b>	Implement the Bacchus Marsh Avenue of Honour Preservation Plan 2023.	Parks & Gardens	Ongoing	Existing operational budget, grant funding as appropriate
<b>Dedicated Avenue of Honour</b>	Review the Tree Preservation Plan every five years and submit any changes to proposed short term replacements to Heritage Victoria for approval.	Parks & Gardens	Year 5	Existing operational budget
<b>All sections</b>	Undertake proactive inspections in line with Council's adopted Urban Tree Management Policy.	Parks & Gardens	Ongoing	Existing operational budget
<b>All sections</b>	Provide regular progress updates to the Moorabool Heritage Advisory Committee.	Parks & Gardens	Ongoing	Existing operational budget

Section	What	Service Unit	Timing	Resourcing
<b>All sections</b>	Maintain all information relating to the Avenue of Honour trees within a centralised system, available to Council staff, including information about tree condition, maintenance works, removals, plantings etc.	Asset Management (with Parks & Gardens, and GIS)	Years 0 – 2	Existing operational budget
<b>All sections</b>	Investigate the feasibility of developing and maintaining online content that contains historical information, tree data etc. considering digital applications for mobile devices, interactive maps, and exploring the potential for collaboration with community groups and individuals,	Comms, and Economic Development (with Parks & Gardens, and GIS)	Years 2 – 4	Existing operational budget, grant funding as appropriate
<b>All sections</b>	Investigate the feasibility of lighting the Avenue of Honour trees, taking into account heritage, environmental and safety etc considerations.	Landscape Design (with Parks & Gardens)	Years 2 – 4	Existing operational budget
<b>All sections</b>	As part of the annual budget process, review resource requirements associated with the ongoing management and maintenance of the Avenue of Honour trees. Explore additional funding sources to assist in the delivery of this service.	Parks & Gardens	Ongoing	Existing operational budget
<b>All sections</b>	Explore additional funding sources to assist in activating the Avenue of Honour and adjacent areas, and improving engagement and/or interpretation of the Avenue and its history, to ensure it remains relevant to the community.	Economic Development	Ongoing	Existing operational budget
<b>Dedicated Avenue of Honour</b>	With the Bacchus Marsh RSL Sub Branch, explore opportunities to publicly display a number of original name plaque variations, and/or make historic name plaques available to families of the servicepeople.	Parks & Gardens	Years 0 – 2	Existing operational budget



# References



## References

AS 2303, 2018, Australian Standard Tree Stock for Landscape Use, Standards Australia.

AS 4373, 2007, Australian Standard, Pruning of Amenity Trees, 2nd Edition Standards Australia.

AS 4970, 2009, Australian Standard, Protection of Trees on Development Sites, Standards Australia.

Ellison, M.J., 2005, 'Quantified tree risk assessment used in the management of amenity trees', *Journal of Arboriculture* 31(2) 2005, International Society of Arboriculture, Champaign, Illinois, USA.

Harris, R.W., Clark, J.R. & Matheny, N.P., 1999, *Arboriculture; Integrated management of landscape trees, shrubs, and vines*, Prentice Hall, Upper Saddle River, New Jersey.

Hitchmough, J., 1994, *Urban Landscape Management*, Inkata Press, Sydney.

John Wadsley Planning and Heritage Consultancy, 2014, Conservation Management Plan – Arch of Victory and Avenue of Honour, Prepared for the City of Ballarat, [http://www.ballarat.vic.gov.au/media/3029010/cmp\\_ballarat\\_avenue\\_of\\_honour\\_and\\_arch\\_of\\_victory\\_final\\_nov\\_2014.pdf](http://www.ballarat.vic.gov.au/media/3029010/cmp_ballarat_avenue_of_honour_and_arch_of_victory_final_nov_2014.pdf), accessed 30 April 2015.

Lambert & Rehbein, 2009, Avenue of Honour Plaque strategy, prepared for the Shire of Moorabool.

Lovell Chen, 2011, Statement by Kate Gray with respect to an appeal against a refusal to grant a permit, Prepared for DLA Piper on behalf of DTP (the Department of Transport and Planning).

Moorabool Shire Council, 2004, Bacchus Marsh Avenue of Honour Strategic Management Plan, Unpublished report by and for Moorabool Shire Council.

QTRA Ltd, 2015, *Quantified Tree Risk Assessment User Manual, Version 5*, Quantified tree Risk Assessment Ltd.

Rose Stererograph Company, c1920-1954, Avenue of Honor, Bacchus Marsh, Image H32492/8756, <http://handle.slv.vic.gov.au/10381/58050>, accessed 27 August 2015.

Spencer, R., Hawker, J. & Lumley, P. 1991 Elms in Australia: their identification and management, Royal Botanic Gardens, South Yarra.

DTP, 2011 DTP supplement to Austroads guide to road design – Part 6 Roadside design, safety and barriers

DTP, 2015, DTP tree planting policy, <https://www.vicroads.vic.gov.au/aboutvicroads/acts-and-regulations/road-network-policy>, accessed 30 April 2015.



## Appendix

### Appendix 1: The Express, August 17, 1918

The following is an extract from The Express published on August 17, 1918. The complete article from that paper has been reproduced to provide the historical context of the planting of the Avenue. Due to the quality of the copy of the article it has not been possible to reproduce all of the article and names. Blanks and question marks indicate the sections in question. The sections in bold are of particular relevance to the management of the Avenue.

THE EXPRESS  
AUGUST 17, 1918  
BACCHUS MARSH  
AVENUE OF HONOR

Within the shadows of the old Woolpack Inn (which has added a chapter or two to the history of the district) there occurred on Saturday last a memorable gathering which added still another chapter to that history—a chapter of which any district might be proud—the planting of two miles of trees as a memorial to the brave soldier lads who have left their homes to go fight for their King & Country.

The movement was only taken up a few weeks ago and the enthusiasm grew as the people became better acquainted with what was expected of them, so much so that on Saturday a crowd of over 1000 persons assembled to witness and assist in the planting ceremony. The Woolpack was chosen as the meeting place, it being about

the half-way point of the Avenue. **The trees (Canadian elms) are planted on both sides of the main Melbourne-Ballarat road, commencing from the present avenue of trees at the east end of the town and extend to within sight of the Lerderderg River at Hopetoun, a distance of nearly two miles.** Next season the Avenue may be extended to Anthony's Cutting.

Each tree stands as a silent sentry representing a gallant soldier, and the length of road so covered gives some faint idea of the district's magnificent contribution in men (the world's best soldiers) to the Empire's Army. **The trees are protected by well-made timber guards, affixed to each of which is a neat sheet-copper embossed name plate, giving the soldier's number, rank, Battalion, &c.**

**The soldiers have been placed in alphabetical order and numbered-the odd on one side and the even on the other, thus placing the members of one family together.** This explanation is given for those who may wonder at the interweaving of the names, as given on the list sheet.

To plant **281 trees** in one afternoon seemed an almost impossible task, but so complete were the arrangements that the feat was accomplished without a single hitch, not only in the afternoon, but in about half-an-hour.

The holes for the trees had already been prepared by a band of willing workers in the morning. A sight that will be long remembered. So keen were the men to assist that this part of the programme almost turned itself into a competition as to who would dig the most. As an instance of this patriotic spirit, the Darley Firebrick Company closed down its works and at about 8 a.m. 30 employees took up their positions in the Avenue, where several of their comrades are represented by.....short time they had 100 holes already. Work much appreciated by the committee. Other individual workers came from all quarters, and by 11 o'clock every hole had been sunk and by noon all the tree guards erected. Many workers who came later were disappointed because there were no holes left for them to dig.

It was now time for the planting supervisors to take charge, each being given a section of so many trees. The soil in the holes was properly prepared by them and the trees stood in position with roots spread out, ready for the afternoon planting. This work of the supervisors is also deserving of commendation, as it not only saved valuable time but will give the young trees every opportunity to thrive, which they should do as everything is in their favor.

Planting Supervisors who assisted -Messrs. Jas. Cowan, F.J. Slack, H. G. Campbell, J.A. Looper, T.W. Campbell, N.C. Woodward, A. Cameron, H. Burbidge, H. Moffatt, H. Marchant, J.G. Wells, W.E. Spurr, W. West, Thos. Cowan, M.Usher, W.C. Woodward, W.F. Woodward and Joseph Lodge (the latter states he assisted his late father to plant the

trees in the vicinity of the Woodpack some 58 years ago—a case of history repeating itself). Now the afternoon ceremony came along. All roads led to the Woolpack, whether you went per foot, motor or horse vehicle, you must get there. And what a grand gathering it was.

"Cook's son-Duke's son-son of a belted Earl Son of a Lambeth publican - it's all the same today!"

All of them there to do honor to those doing their country's work.

**Major Baird, MLA**, who has seen Active Service in the present war, came from Ballarat to pay homage to his comrades in arms, and, at the invitation of the Shire President Brown, **planted the honor tree.**

The people were then asked to distribute themselves along the whole length of the avenue, the relatives or friends of the soldiers (many of whom came from a distance) taking up their positions at the trees they had been invited to plant. This instruction was accomplished by the kindness of various motor and vehicle owners conveying passengers with dexterity along the route-half went eastward and the other half westward. **A bugle call was then sounded as the signal to commence the planting simultaneously.**

This again was a sight to be remembered. "Tears were hung on every tree"—tears of joy for the lad who had returned, of pride and anxiety for those still in the ranks and of sorrow for the one who had paid the supreme sacrifice; and of the latter there were quite a number, many wreaths, Battalion, colors, and other tributes of love and respect marking their places.

Of the 281 soldiers honored in this way, many had gained distinctions, including a Victoria Cross, the Military Cross, the Distinguished Conduct Medal, Military Medal, &c.

As already stated, the planting ceremony occupied but half-an-hour—a most pleasant surprise to all, as it prevented the proceedings dragging. The people were then conveyed back to the meeting place in the same manner as they were distributed.

The official ceremony opened with the singing of the National Anthem, after which Shire President Brown introduced Major



Baird, and in doing so said the avenue was one of the splendid things they could do in honor of their soldiers. When the boys came back they would see they had not been forgotten. The next generation would also see by the trees what their forefathers had done for them.

Major Baird expressed his pleasure at being present, and having the honor of planting the first tree. Although Bacchus Marsh was looked upon as the hub of Victoria it was the first time that he had been here. He hoped they would be able to make room in this prosperous district for some of the gallant soldier lads to settle permanently. The avenue was a fitting memorial to these gallant men - it was one of the finest things they could do. It would some day be a feature between Melbourne and Ballarat, where the avenue idea originated, by 500 girls from one factory taking the matter up. Over 3000 trees had now been planted, covering some 10 miles of road. Whilst at the Front he had come in contact with one of their local lads - Captain Godfrey, who had given his life for his country, and one of the finest officers they had. He would always have a warm spot in his heart for him. But young Godfrey was only a representative of other gallant lads from this district, so was it any wonder that it raised the spirit within them - let that spirit grow and strengthen, so that they would not only honor their brave men today but each day of their lives. When he returned from the Front to Australia he met two classes of people; one said "When are you going back?" The other said "You've done your bit, and up to you to have a spell." One class did not care a rap what had been done for them whilst others extended the helping hand. The latter was the way to honor their returned men. He was a Britisher to the backbone. Germany was not more mightier than us. The British race transcends them all. Their soldiers were representatives of that great race. When Germany threw the challenge down in this Great War she thought that the British race was done, she thought that the manhood of the Empire had been sapped by commercialism and luxury. But was she right? With Kitchener's call to arms the

young men came to Britain's aid, and so the challenge of Germany was taken up in a way she never thought of. Germany thought she could walk through the "contemptible little army" and bring France to her knees. But before she was able to do that there were a million British soldiers there. So the same rebuff had been given to Germany in other places. In Mesopotamia (which would prove one of the richest parts of the world) Egypt and Palestine they had flung the Germans back and planted the banner of their Great Empire on the banks of the Jordan. These feats were equal to anything that Germany had done. In France the British army was holding the key to Paris, which was also the Key of France and the channel ports. If Germany got possession of these, things would be made "hot" for us. He asked them to think of that and they would recognise what the Empire and their gallant lads meant to them. He believed the Australians were the finest soldiers in the world. He did not say they were the only men who could fight, but the Australian soldier had the spirit, dash and head required in modern warfare. When they realised what these gallant lads had done for them, was it any wonder they assembled there that day to do honor to them. There would be great calls made on them repatriate these men. He would not criticise the authorities on what they had done but he believed they could have done more. No Government could do what was wanted unless it had the inspiration of the people behind it. He asked that they assist the Government to repatriate these lads, who belonged to the Greatest Empire upon which the sun ever shone. Major Baird then gave an instance of how the Australian's loved their officers, of how four men volunteered to go out into "no man's land" - every inch of which was raked by machine guns - in an attempt to bring in the body of an officer who had been killed, but the men also lost their lives - showing their last tribute to a beloved officer. Surely then, we here could do something which was no sacrifice at all. They were great men, these Australians, about whom some unkind things had been said - some deserved perhaps, as they were not all angels. He appealed to them to remember these

gallant men each day through life and if they could do anything to help them back to civil life do so. (Applause)

Mr. P. Alkemade (of Melbourne and a representative of the State War Council) also spoke, and appealed to the eligible young men to "get to it" at once and get some documentary proof that they had taken their part in this Great War, and prove themselves worthy sons of the pioneers who had come here before them. He had just planted a tree for Sgt. Major O'Brien, one of their local men who had won the D.C.M. and proved himself a man. The deeds of these men shone throughout the Empire and would be handed down as a glorious heritage. The avenue would be an evergreen monument forever and he complimented the district for undertaking it.

President Brown apologised for the absence of Sergeant Lister, M.H.R., and Hon. A. R. Robertson, M.L.A., who were present at similar function at Macedon.

Cr. McMahon moved a vote of thanks to the ladies for providing the refreshments. He always noticed they "toed the mark" in a manly, noble manner when their assistance was required. He also mentioned that the men had put up a record that morning digging 200 holes for the trees in tree hours.

The National Anthem and "God bless our splendid men" also three hearty cheers for the "Boys at the Front," closed the notable gathering.

The weather elements were kind - so kind that the ladies were able to set their refreshment tables in the open air. But to provide against any emergency, the "commercial rooms" of the old Woolpack had been prepared as a shelter pavilion - fortunately not needed. Thanks in profusion due to the ladies Sunshine Brigade (in charge of Red Cross President Anderson) who provided lunch for the workers and tasty refreshments later on for afternoon tea - all and sundry being provided for. Special thanks recorded to Mr. and Mrs. Alfred Slack and family for assistance in this same department and placing their house, grounds and everything they possessed at the disposal of the ladies. Thanks again to the members of the

Commonwealth Army (in charge of Lieut. Russell) who attended and formed a Guard of Honor when the official speeches were being made. This added the military tone necessary to the gathering.

Generalissimo Cr. W. Grant Mortan, J.P., has had many triumphs in displaying his organising power in making successes of local functions, but last Saturday's gathering (to which he acted as Hon. Organiser) can be classed as his super-triumph, and it must be very gratifying to him to know that the time which he devoted to this worthy object had such a successful climax. To organise a function without any previous .....to work.....difficult, but to have to cram it all into a limited space of time increases the task - a task which grew into considerable magnitude, as all the details of the soldiers had to be collected, placed in alphabetical and numerical order, which could not be done until the last moment, and see that a hundred and one other things were provided - if the odd one happened to be forgotten confusion may have resulted - but it didn't. The thanks of the community is therefore due to Mr. Mortan for his valuable services - not forgetting his motor service.

Now the work which the public did not see being carried out has to be recognised - the making of the 281 tree guards. Different proposals were put forward as to their supply, but Mr. H.E. Connor stepped into the breach and undertook to see that they were provided free of charge, if the timber was supplied him. Here again time was the essence of the contract, and timber being difficult to procure made the time shorter, which necessitated "speeding-up" on the part of Mr. Connor and his noble assistants, who, it must be remembered, worked in the night time after their usual day's toil was done. Mr. Connor says "each and everyone is willing to do the same again if occasion arises." Too much prominence cannot be given to this patriotic work, therefore the names of those who participated in it and the hours worked are given: - H. E. Connor, 47 hours or 12 nights; W.T. Wittick, 15 hours or 7 nights; J. A. Morton, 11 hours or 5 nights; E. Brazier, 8 hours or 6 nights; H. Marchant, 6 hours or 3



nights; N. C. Woodward, 6 hours or 3 nights; A. J. Grant, 6 hours or 3 nights; W. E. Spurr, 4 hours or 2 nights; L. Dugdale, 4 hours or 2 nights; D. Barry, 3 hours or 2 nights; Ern Wittick, 2 hours or 1 night; E. Barry, 2 hours or 1 night; W. C. Woodward, 2 hours or 1 night; W. F. Woodward, 2 hours or 1 night. Mr. A. Newman can be added to the above band, as he rendered valuable assistance in free cartage of the timber for the guards. Messrs. R.H. Dugdale and J.G. Wells kindly attended to the delivery of the guards along the route.

**Although the Bacchus Marsh Shire Council stood as guarantor for the work, it was relieved of much expense by almost the whole of the trees and guards being donated, and the various “working bees” also reduced the outlay. At Creswick we note that it cost the Shire 1 pound for each**

tree and the nameplate; at Bacchus Marsh the work has been well executed for half that amount-evidence of good management. We have been requested to publish the names of the soldiers represented in the Avenue and the persons who planted the trees to their memory. The following is the list, as far as we have been possible to ascertain:-

Additional trees donated to Bacchus Marsh Avenue of Honor, making a total of 232: - Two each - A. Moon (Melbourne), James Smith (Rowsley), Employees Darley Firebrick Co. (making 7), J. D. Cameron. One each-Miss Ida Moore, Mrs. R. G. Lyle, Mrs. McPherson (Melton), S. Whelan, D. O’Keefe, jun., W. D. Hogan, H Love, E. Moss, M McLeod (Broadlands), W. Symington, H Dawson, C.F. Hegarty, Mrs. F. Brighton.

Appendix 2: Name Plate Types




Summary of Plaque Types

Summary of plaques on-site as at 2004 (Source: Moorabool Shire Council 2004)

Name plate type	No. of plaques	Comment
Embossed copper mounted on a wooden block. Originally mounted to the timber tree guard. This example was remounted on a post probably by CRB in early 1960s	4	Probably the original 1918 plates, uncommon and often damaged
Engraved bronze on bevelled hardwood base.	4	Only associated with replacement trees on realigned corners. Probably installed by Country Roads Board from early 1960s.
Embossed aluminium – Two types (Type 2A and Type 2B). Type 2A has rank in smaller letters than surname, Type 2B has rank in the same size letters as surname)	121	Proposed to adopt Type 2A of this plaque type for the Avenue. Appropriate to keep type 2B in the interim until funding permits replacement.





Name plate type	No. of plaques	Comment
		
<p>Cast aluminium with raised lettering. Mounted to a variety of boards, although predominantly treated pine and hardwood. Mounted to trees by various straps and brackets.</p> 	132	Most common but generally felt to be an incorrect style for the Avenue of Honour. Appropriate to keep in the interim until funding permits replacement
<p>Cast bronze with raised lettering on a bevelled hardwood base. Mounted to the tree by hoop iron straps</p> 	1	
ADD CURRENT PLAQUE TYPE		

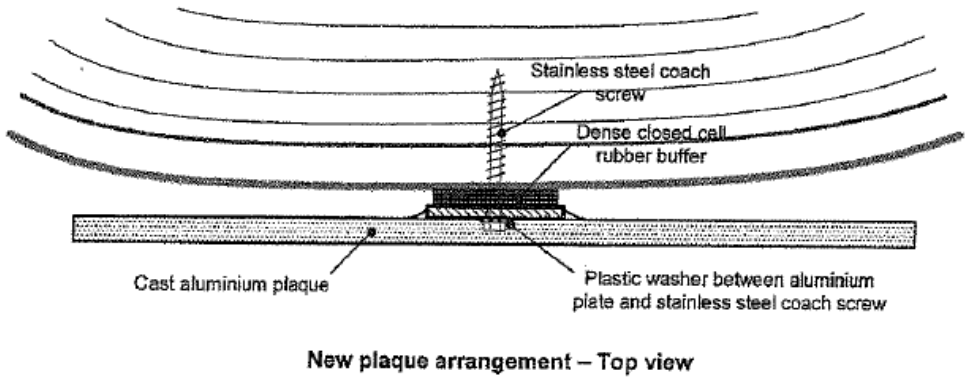
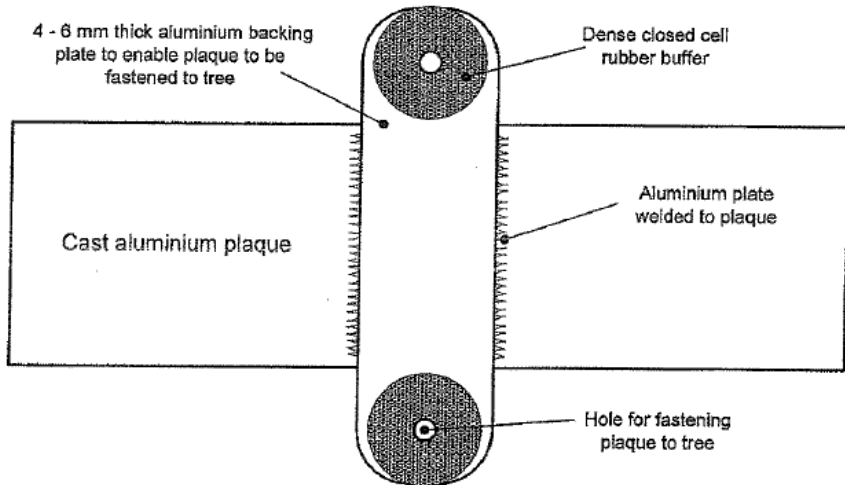
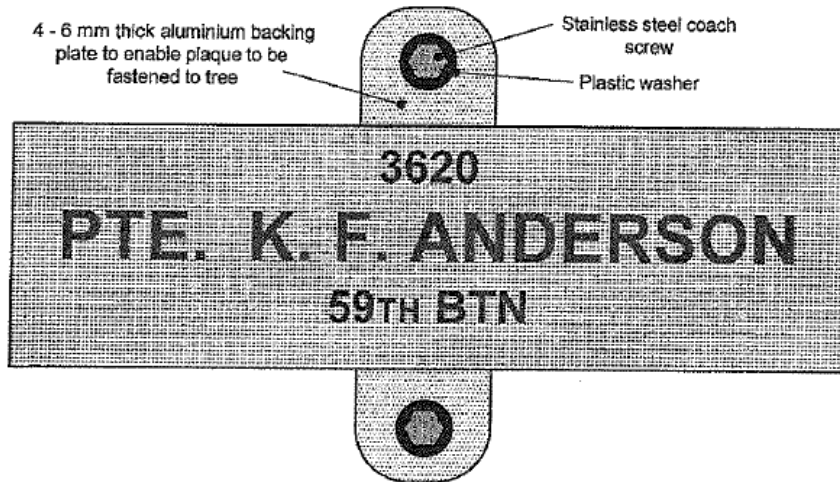


FIGURE 9: Plaque arrangement (front, back and top view)



Register of Plaques

North (N) or South (S)	Tree No.	Rank	Initials	Surname	Reg No	Unit
N	1	A-mech	FL	ADAMS	44	Aust Flying Corps
S	2	TPR	WJH	ALLAN	57417	4th EGSR
N	3	CPL	JW	ALLAN	473	2nd Aust tunnel Coy
S	4	CPL	J	ALMOND	95	13th LH
N	5	PTE	AF	ANDERSON	51300	GSR
S	6	PTE	KF	ANDERSON	3620	59th Bn
N	7	TPR	A	BARRETT	2124	1st ANZAC Mtd Regt
S	8	PTE	HT	BARRY	61823	13th GSR
N	9	PTE	P	BARRY	1794	12th FAB
S	10	SPR	PG	BARRY	5344	AEMU
N	11	LT	JR	BENNETT	4979	22nd Bn
S	12	PTE	RK	BARRY	5329/ 5649	14th Bn
N	13	PTE	GF	BENCE	830	38th Bn
S	14	PTE	PC	BARRY	7198	14th Bn
N	15	PTE	W	BENNETT	815	AASC
S	16	PTE	CW	BIRD	2539B	43 Bn
N	17	SGT	LE	BLAKE	1939	3rd NZNG Coy
S	18	SGT	LE	BIRD	1876	59th Bn
N	19	PTE	HN	BLAKE	5513	5th GSR
S	20	PTE	TH	BOOTH	2819	6th Bn
N	21	CSM	WH	BLAKE	4000	AL Railways
S	22	PTE	WC	BOOTH	3556	2nd Pioneers
N	23	GNR	EG	BOTTLE	50	AGBDAFA
S	24	PTE	H	BOTTLE	2575	21st Bn
N	25	PTE	HC	BOTTLE	6711	5th Bn

North (N) or South (S)	Tree No.	Rank	Initials	Surname	Reg No	Unit
S	26	DVR	JC	BOURKE	11734	5th Amm Col
N	27	PTE	WH	BOURKE	5050	6th Bn
S	28	PTE	J	BOYD	1103	38th Bn
N	29	PTE	R	BOYD	1343	8th Bn
S	30	PTE	W	BRENNAN	1599	8th Bn
N	31	TPR	F	BRIGHTON	311	1st Aust Remount
S	32	PTE	I	BRUNT	955	14th Bn
N	33	PTE	J	BUSHBY	10	21st Bn
S	34	PTE	J	BUCKLEY	161	3rd Pioneers
N	35	PTE	AJ	BUCKLEY	1876	56th Bn
S	36	PTE	W	BUCKLEY	6010	11th Bn
N	37	PTE	EW	CAMERON		8th Bn
S	38	SGT	HH	CAMPBELL	3058	8th Bn
N	39	PTE	AN	CAMPBELL		104th Coy
S	40	PTE	GL	CAMPBELL	3368	59th Bn
N	41	PTE	JH	CAMPBELL	3123	60th Bn
S	42	A-mech	WA	CAMPBELL	438	AFC
N	43	PTE	JR	CALDERWOOD	1800	24th Bn
S	44	PTE	AJ	CARTER	2938	37th Bn
N	45	PTE	WW	CARTER	1833	3rd Pioneers
S	46	FAR SGT	J	CARDELL	2993	15th FC Engr
N	47	PTE	HHH	CHAMBERS	648	7th Bn
S	48	CPL	F	CASPAR	19671	8th FAB
N	49	TPR	F	CHAMBERS	60660	GSR
S	50	DVR	EH	CASHMORE	934	12th AFA
N	51	GNR	JH	CHAMBERS	3370	2nd Bty RBA



Register of Plaques

North (N) or South (S)	Tree No.	Rank	Initials	Surname	Reg No	Unit
S	52	TPR	WG	CHIPPINDALE	1088	4th LH
N	53	PTE	A	CLARK	3050	60th Bn
S	54	PTE	A	CLANEY	5325	22nd Bn
N	55	SGT	W	CLARK	384	1st ANZAC Bn
S	56	PTE	R	COATES	5048	3rd LH Bgde Train
N	57	PTE	E	COBHAM	4465	6th Bn
S	58	GNR	DJ	COGLAN	10331	2nd FAB
N	59	PTE	HA	CONDON	12/983	Auckland Bn
S	60	DVR	MB	COGLAN	8282	6th FAB
N	61	TPR	JD	CONNELL	561A	13th LH
S	62	PTE	JA	CONNOR	5309	21st Bn
N	63	TPR	WH	CONNELL	3989	4th LH
S	64	PTE	WA	COOK	3068	15th MG Coy
N	65	CPL	WR	COOK	3790	58th Bn
S	66	DVR	J	COSGROVE	1181	11th BCD
N	67		M	COSGROVE	3113	AFA
S	68	SGT	WR	CROUCH		8th Bn
N	69	SGT	DM	CROWE	4161B	1st Pioneers
S	70	PTE	R	CROTON	1207	23rd Bn
N	71	LT	NR	CUTHBERTSON		23rd Bn
S	72	CPL	CE	CROOK	609	2nd ANZAC Mtd Regt
N	73	BDR	CD	CUMMING	20070	8th FABK
S	74	SGT	FH	CROOK	1360	1st FAB
N	75	PTE	NH	CUMMING	5671	5th Bn
S	76	CPL	JR	CROOK	5333	22nd Bn

North (N) or South (S)	Tree No.	Rank	Initials	Surname	Reg No	Unit
N	77	TPR	A	CUMMING	333	1st Aust Remount
S	78	DVR	CW	CROOK	2178	3rd FAB
N	79	PTE	A	DAVIS	60666	GSR
S	80	PTE	GT	DAVIS	16	24th Bn
N	81	PTE	L	DAVIS	3079	60th Bn
S	82	PTE	WGE	DAVIS	6484	7th Bn
N	83	TPR	AR	DAVISON	3231	8th LH
S	84	CPL	SC	DUBOUT	3964	5th Tunnel Coy
N	85	TPR	ND	DAVISON	175	13th LH
S	86	PTE	V	DUBOUT	6644	14th Bn
N	87	TPR	RG	DAVIDSON	1555	8th LH
S	88	PTE	F	DODEMAIDE	2792	57th Bn
N	89	PTE	W	DIXON	4190	8th Bn
S	90	PTE	TJ	DODEMAIDE	534	6th Bn
N	91	PTE	J	DAVISON	2910	31st Bn
S	92	PTE	WH	DUKELOW	156	WH
N	93	PTE	A	DURWARD	3462	46th Bn
S	94	PTE	A	DREVER	959	8th Bn
N	95	DVR	CR	EDWARDS	403	2nd ANZAC Mtd Regt
S	96	PTE	CJ	EARL	2115	8th LH
N	97	DVR	RW	EDWARDS	1865	12th FCE
S	98		GF	EARL		Unfit for service
N	99	SPR	WB	EDWARDS	5436	12th FCE
S	100	PTE	WA	EDGERTON	3798	46th Bn
N	101	PTE	RR	EVANS	591	7th Bn



Register of Plaques

North (N) or South (S)	Tree No.	Rank	Initials	Surname	Reg No	Unit
S	102	GNR	JH	EDGERTON	44	10th MGC
N	103	DVR	RW	EDOLS	1160	2nd DAC
S	104	PTE	J	EMMETT	192	6th Bn
N	105	PTE	RM	EMMETT	6261	8th Bn
S	106	DVR	JB	FAGG	17647	4th LH FA
N	107	PTE	AE	FAIRBANK	2710	59th Bn
S	108	PTE	AG	FARROW	614	7th Bn
N	109	PTE	H	GEORGE	408	5th Bn
S	110	LT	AJ	GIBSON		10th Bn
N	111	BDR	HTV	GEORGE	27511	4th FAB
S	112	CAPT	TCE	GODFREY		24th Bn
N	113	PTE	W	GOUDIE	3762	6th Bn
S	114	PTE	RT	GRANT	4196	14th Bn
N	115	PTE	CA	GLADMAN	1083	8th Bn
S	116	PTE	HS	GRANT	3149	58th Bn
N	117	CAPT	R	GRANT		5th AMV Sect
S	118	PTE	JW	HAMMOND	6591	6th Bn
N	119	PTE	C	HANRAHAN	5682	14th Bn
S	120	PTE	WS	HARKNESS	5841	24th Bn
N	121	PTE	TL	HAWKINS	13950	2nd LH
S	122	PTE	AW	HINE	585	7th Bn
N	123	PTE	AWT	HINE	5368	22nd Bn
S	124	PTE	RJ	HOGG	3772	46th Bn
N	125	CPL	DG	HOLLIS	2379	4th Pioneers
S	126	PTE	H	HOLMAN	889	14th AASC
N	127	SGT	WT	HORDER	4515	58th Bn

North (N) or South (S)	Tree No.	Rank	Initials	Surname	Reg No	Unit
S	128	CAPT	CB	HOPKINS		14th Bde HQ
N	129	PTE	J	JOHANSEN	3818	6th Bn
S	130	PTE	W	JOHNSTON	4740	21st Bn
N	131	PTE	JE	JOHANSEN	3418	55th Bn
S	132	PTE	CA	JONES	915	3rd Div Sigs
N	133	TPR	HJJ	JONES	62	13th LH
S	134	GNR	JL	KEDDELL	1186	1st & 2nd Bn
N	135	CPL	P	JONES	52572	SDD Sig Coy
S	136	PTE	JM	KENNELLY	1865	A Coy 29th Bn
N	137	PTE	WR	KERR	6349	23rd Bn
S	138	GNR	RJ	KERR	34135	AFA
N	139	PTE	GM	KERR	2676	57th Bn
S	140	CAPT	HJ	KING		22nd Bn
N	141	PTE	AJ	KNIGHT	3376	6th Bn
S	142	CPL MECH	AW	LADHAMS	2134	AFC
N	143	SGT	FH	LAY	529	46th Bn
S	144	PTE	P	LEITCH	4458	21st Bn
N	145	LT	GT	LITTLE		13th FCE
S	146	CPL	DS	LINDSAY	3482	2nd Bde
N	147	LT	LP	LITTLE		37th Bn
S	148	DVR	RJ	LINDSAY	34253	3rd DAC
N	149	A/M	D	LITTLE	3508	AFC
S	150	DVR	CA	LOW	1846	DAC
N	151	PTE	BP	LOVE	623	37th Bn
S	152	DVR	JA	LOWE	10540	1st DAC



Register of Plaques

North (N) or South (S)	Tree No.	Rank	Initials	Surname	Reg No	Unit
N	153	DVR	C	LYLE	547	7th Bn
S	154	PTE	JC	LOW	5045	24th Bn
N	155	PTE	J	MAIN	2747	7th Bn
S	156	TPR	TH	MANLY	1386	13th LH
N	157	SGT	EJ	MORLEY	3190	60th Bn
S	158	PTE	EE	MARSH	1139	14th Bn
N	159	CPL	A	MARTIN	3384	6th Bn
S	160	CPL	WG	MEDLING	3410	14th Bn (Pay Corps)
N	161	PTE	S	MINNETT	2709	28th Bn
S	162	PTE	GS	MITCHELSON	1881	37th Bn
N	163	PTE	H	MOFFATT	183	59th Bn
S	164	LT	RV	MOON		58th Bn
N	165	SPR	P	MOFFATT	17046	3rd Div Sigs
S	166	TPR	AS	MOON	2194A	4th LH
N	167	PTE	JH	MOORE	212	22nd Bn
S	168	SGT	KE	MOORE	1932	22nd Bn
N	169	CPL	G	MOORE	2879	1st DAC
S	170	CPL	WR	MORTON	450	13th LH
N	171	PTE	DR	MOORE	1578	2nd MG Coy
S	172	SGT	GB	MORGAN	2467	46th Bn
N	173	PTE	P	MOORE	4476	21st Bn
S	174	PTE	A	MURDOCH	552	7th Bn
N	175	PTE	FA	MOORE	2260	24th Bn
S	176	PTE	T	MURPHY	1238	59th Bn
N	177	GNR	WF	MURCOTT	10544	51st Bty AFA
S	178	PTE	SV	MCDOUGALL	6402	23rd Bn

North (N) or South (S)	Tree No.	Rank	Initials	Surname	Reg No	Unit
N	179	SGT	HG	MCFARLANE	4190	Motor Tpt
S	180	LT	CJ	MCFARLANE		HMAS Brisbane
N	181					
S	182	GNR	J	MCGREGOR	978	AFA
N	183	PTE	J	MCGREGOR	6049	38th Bn
S	184	PTE	CE	MCKENZIE	5432	5th Bn
N	185	LT	N	MCLACHLAN		6th Bn
S	186	SGT	WSA	MCKENZIE	455	4th LH
N	187	PTE	JJ	MCLACHLAN	4767	6th Bn
S	188	TPR	JJ	MCPHERSON	1060	4th LH
N	189	CAPT	FL	NANCE		AAMC
S	190	TPR	JP	NOLAN	1549	4th LH
N	191		WH	NOLAN	8985	AFA
S	192	SGT	MJ	O'BRIEN	1542	14th Bn
N	193	A/M	ANA	O'HARA	1488	AFC
S	194	PTE	ER	OLIVER	316	A Coy 29th Bn
N	195	PTE	T	OLIVER	627	1st Pioneers
S	196	PTE	R	OLIVER	2238	39th Bn
N	197	PTE	HS	OLIVER	1143	23rd Bn
S	198	PTE	CV	OLIVER		AAMC
N	199	PTE	EA	OLIVER	2035	2nd Light Railway
S	200	PTE	J	O'LEARY	709	21st Bn
N	201	PTE	E	ORTON	2277	59th Bn
S	202	PTE	T	O'LEARY	581	7th Bn
N	203	SGT	PB	OSBORNE	6079	8th Bn
S	204	SGT	S	OSBORNE	3429	5th Pioneers



Register of Plaques

North (N) or South (S)	Tree No.	Rank	Initials	Surname	Reg No	Unit
N	205	CPL	P	OSWIN	84	13th LH
S	206	GNR	M	QUINN		
N	207	CPL	GG	PATTERSON	120	1st Div Sigs
S	208	DVR	WJ	PEZET	403	7th Bn
N	209	SPR	AB	PATTERSON	17861	1st AAC
S	210	PTE	F	PIGOTT	2034	21st Bn
N	211	GNR	WT	PHILLIPS	10566	1st AFA
S	212	TPR	TJ	PHILLIPS	1410	13th LH
N	213	PTE	WH	PLATT	2017	7th Bn
S	214	PTE	HG	PRICE	2884	58th Bn
N	215	CPL	CH	PLATT	7066	14th Bn
S	216	GNR	CF	RAMSAY	32435	3rd DAC
N	217	GRN	R McH	RAMSAY	38528	AFA
S	218	PTE	T	RAWLINSON	6407	4th FAB
N	219	SGT	RM	REID	7553	5th Bn
S	220	PTE	GC	ROBSON	1169	7th Bn
N	221	PTE	W	ROGERS	3360	3rd Pioneers
S	222	SGT	DA	ROSS	5440	58th Bn
N	223	PTE	JW	ROSS	7571	8th Bn
S	224	DVR	H	RUDDICK	107635	RFA
N	225	PTE	F	RUSSELL	3473	14th Bn
S	226	MAJ	WB	RYAN		AAMC
N	227	PIPER	IJ	RUSSELL	1308	9th Bn
S	228	LT	EJ	RYAN	1940	59th Bn
N	229	P	RJ	RUSSELL	4329	4th Sig Coy
S	230	P	J	RYAN	4286	3rd MG Coy

North (N) or South (S)	Tree No.	Rank	Initials	Surname	Reg No	Unit
N	231	P	WT	SERGEANT	7605	14th Bn
S	232	SGT	JS	SHORT	2684	57th Bn
N	233	LT	W	SHIELDS		Shropshire Regt
S	234	P	TJ	SIMMONS	5089	6th MG Coy
N	235	LT	FN	SIMPSON		3rd Pioneers
S	236	A/M	NP	SIMPSON	1085	AFC
N	237	LT	TH	SKENE		14th Bn
S	238	PTE	AG	SLACK	2484	2nd Pioneers
N	239	PTE	EA	SMITH	5953	23rd Bn
S	240	PTE	MG	SMITH	3928	8th Bn
N	241	SGT	RN	SMITH	951	4th Bn
S	242	PTE	TH	SMITH	246	22nd Bn
N	243	PTE	GT	SMITH	1245	29th Bn
S	244	PTE	JC	SMYTH	5671	24th Bn
N	245	PTE	CH	SOMERTON	3203	51st Bn
S	246	LT	JEA	STUART		11th Bn
N	247	PTE	G	SUTTON	3435	4th Pioneers
S	248	PTE	H	SWANSON	2760	29th Bn
N	249	PTE	WH	SYMINGTON	5750	7th Bn
S	250	PTE	J	TANCOE	16419	12th AFA
N	251	SPR	FJ	TINKER	18131	Sig Sqn
S	252	FAR	C	TODD	461	1st Remounts
N	253	SPR	CM	TODD	498	4th LH
S	254	PTE	WJ	TODD	3282	1st Pioneers
N	255	LT	FG	TOY	970	RFC
S	256	PTE	WJ	TREGONING	5305	22nd Bn



Register of Plaques

North (N) or South (S)	Tree No.	Rank	Initials	Surname	Reg No	Unit
N	257	LT	J	TURNOUR	854	59th Bn
S	258	CPL	KE	TURNOUR	26626	2nd AFA
N	259	PTE	JO	TURNOUR	5099	24th Bn
S	260	PTE	AW	TURNOUR	673	38th Bn
N	261	LT	A McK	TYERS		AFC
S	262	DVR	AJ	USHER	11937	3rd DSC
N	263	LT	PJ	VALLENCE		4th LH
S	264	DVR	M	USHER	9839	3rd ASC
N	265	CPL	W	VALLENCE	541	8th LH
S	266	PTE	JWH	USHER	1581	27th Bn
N	267	PTE	JH	VINNING	3686	4th Sig Coy
S	268	PTE	FD	WARD	5747	14th Bn
N	269	PTE	T	WARKE	3508	1st Div
S	270	SGT MAJ	TC	WATERHOUSE	522	AIF
N	271	PTE	H	WATSON	1200	7th Bn
S	272	PTE	AH	WAUD	2838	7th Bn
N	273	SGT	NSR	WEST	5432	22nd Bn
S	274	TPR	MJ	WHELAN	511	4th LH
N	275	TPR	W	WEST	2649	1st LH
S	276	PTE	CD	WILLIAMS	7340	23rd Bn
N	277	PTE	CG	WEST	5431	22nd Bn
S	278	LT	JM	WEST	293	7th Bn
N	279	CPL	S	WITHAM		5th Bn
S	280	PTE	A	WOODWARD	55705	7th GSR
S	282	SISTER	KM	ROGERS		AANS





## **Moorabool Shire Council**

Principal office  
15 Stead Street  
Ballan  
Victoria 3342

T (03) 5366 7100  
**[moorabool.vic.gov.au](http://moorabool.vic.gov.au)**