



Municipal Fire Management Sub Plan 2023 – 2027
Moorabool Shire

Version 1.0P

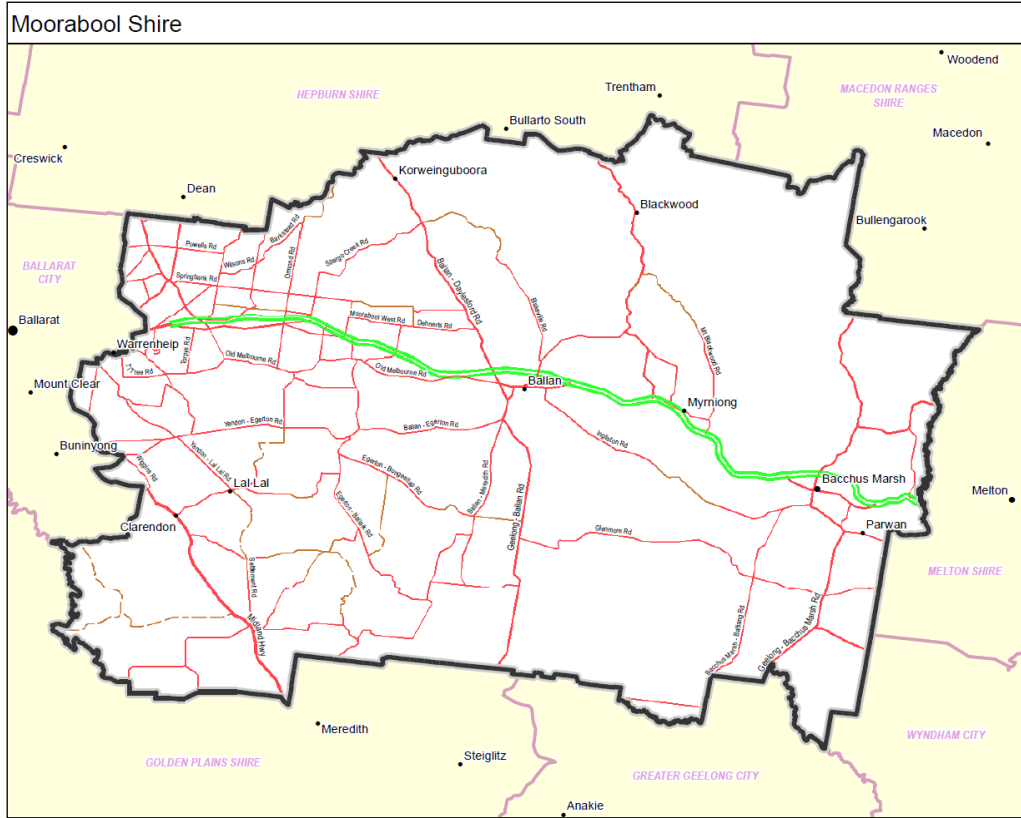


Figure 1: Moorabool Shire boundaries

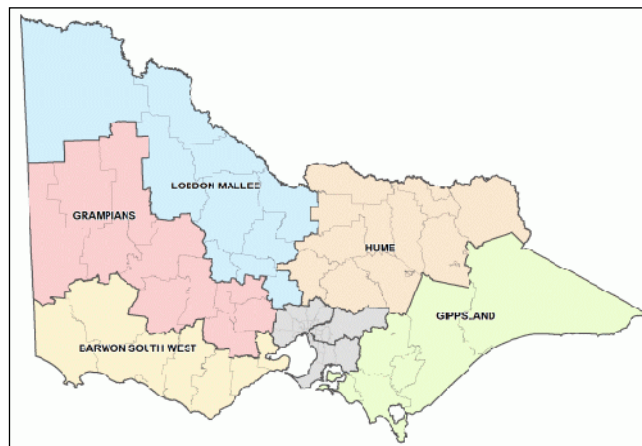


Figure 2: Map of Fairer Victoria Boundaries (Moorabool is in Grampians region)

Foreword

This is the first version of the Fire Sub Plan for the Moorabool Shire under the new EM Planning Reforms Legislation 2020. This Sub Plan is now based around a working and action plan for the fire management agencies and other emergency services involved in the Fire Sub Committee.

Context Statement

This Plan will be endorsed by the Municipal Emergency Management Planning Committee and undertake a self-assurance assessment before being provided to the Regional Emergency Management Planning Committee for approval.

Version Control Table

Version Number	Date of Issue	Author(s)	Brief Description of Change
1	16/05/2023	MFMP	Version 1 accepted by MEMPC at recommendation of MFMP
1.0P	28/08/2023	C Anderson	Version 1 approved by REMPC; redacted version for public use

Disclaimer - Hardcopies of this document are considered uncontrolled. Please refer to the Moorabool Shire website for the latest version.

Table of Contents

Foreword	iii
Context Statement	iii
Version Control Table	iii
Table of Contents	iv
1 Introduction	5
1.1 Our Traditional Owners	5
1.2 Subcommittee Membership.....	5
1.3 Role of the Subcommittee.....	6
2 Environmental Scan	7
2.1 Location and Tenure.....	7
2.2 Natural Environment.....	7
2.3 Land Use.....	8
2.4 Climate and Bushfire Season.....	8
2.5 History of Fire and Ignition Causes.....	8
2.6 Future Fire Management Implications.....	9
3 Fire Risk Management Strategies	10
3.1 Risk Assessment Methodologies	10
3.2 Neighbourhood Safer Places – Places of Last Resort	11
3.3 Community Fire Refuge.....	12
3.4 Strategic Fire Break Definitions	12
3.5 Individual Bushfire Risk Treatments.....	12
3.6 Cross Boundary Arrangements.....	14
Appendix A: Self-Assurance Checklist	14
Appendix B: Agency Work Plans	16
B.1 List of fire access tracks	16
Appendix C: Statutory Audit Obligations	29
Hazard Trees Identification and Notification Procedures.....	29
Appendix D: Neighbourhood Safer Places – Places of Last Resort and Community Fire Refuge	1
D.1 Neighbourhood Safer Places – Places of Last Resort:	1
D.2 Community Fire Refuge	2
Appendix E: Roads (Vegetation Management)	3
Appendix F: Acronyms	4

1 Introduction

This Fire Management Sub Plan (the 'sub plan') has been developed as a workplan for agencies to assess in the case of fire-related emergencies. It has been developed by a subcommittee of the Municipal Emergency Management Planning Committee (MEMPC), co-chaired by Country Fire Authority (CFA) and the Department of Energy, Environment and Climate Action (DEECA) and is subject to a self-assurance check through the new Emergency Management Planning legislation. Other members of the subcommittee include Forest Fire Management Victoria (FFMV), Regional Roads Victoria (RRV), and Fire Rescue Victoria (FRV). The subcommittee is known as the Moorabool Municipal Fire Management Planning Subcommittee (the 'subcommittee').

This sub plan contains actions and workplan details for partner agencies involved in the subcommittee and primarily relates to the Preparedness stage of the disaster cycle.

The purpose of this sub plan is to chart the planned and coordinated implementation of measures designed to minimise the occurrence, and mitigate the effects, of bushfire, grass fire, residential and industrial fires in the community.

Critical to the success of Fire Management Planning is the ongoing building and maintenance of relationships across government, the private sector and the broader community. Participation, support and cooperative decision making by all these sectors working in collaboration to develop fire strategies, programs and plans for all types of fire risk, and meeting the needs of local communities, are all essential for effective implementation of fire management planning.

This plan replaces the Moorabool Shire Municipal Fire Management Plan 2020-2022.

1.1 Our Traditional Owners

The subcommittee acknowledges the Indigenous history of Moorabool Shire, and respectfully acknowledges the Traditional Owners of the land which includes the Wurundjeri Woi Wurrung, Wadawurrung and Dja Dja Wurrung people. We pay our respects to the Elders past, present and emerging.

1.2 Subcommittee Membership

The Moorabool Fire Management Subcommittee has representation from the following organisations:

1.2.1 Core Membership

- Moorabool Shire Council: Municipal Emergency Management Officer (MEMO), Municipal Fire Prevention Officer (MFPO), Emergency Management Planning Officer
- Country Fire Authority (CFA) – Vegetation Officer, Group Officers, Moorabool Catchment Commander, CFA / Community Representative
- Department of Energy, Environment and Climate Action (DEECA) / Forest Fire Management Victoria (FFMV)
- Fire Rescue Victoria (FRV)
- Regional Roads Victoria (RRV)
- Hancock Victoria Plantations (HVP)
- V/Line

1.2.2 Non-Core Membership

- Agriculture Victoria (AgVic)
- Department of Jobs, Skills, Industry and Regions (EcoDev)
- Greater Western Water
- Barwon Water

- Central Highlands Water
- Victoria Police (VicPol)
- State Emergency Service (VICSES)

1.2.3 Voting Rights

The representative of each core member has one vote.

If deemed necessary for transparency and equity, the committee can invite additional standing members who may not have voting rights.

Members of sub-committees or working groups do not have voting rights unless they are also members of the MEMPC.

1.3 Role of the Subcommittee

- Provide a subcommittee forum to focus on a key risk (fire) and sustain organisational partnerships, generate a common understanding and shared purpose regarding fire management and ensure that the plans of individual agencies are linked and complement each other.
- To ensure an integrated focus on fire management planning occurs.
- Plan for fire management and develop a fire management sub plan for the Moorabool Municipal footprint in a manner that coordinates fire management activities and acts as a conduit to the community
- Make recommendations to the MEMPC on fire management planning issues
- Monitor, review and report on the delivery of the Fire Management Sub Plan
- Advocate through the MEMPC to the Regional Emergency Management Planning Committee (REMPC) for municipal fire management needs.
- Work with the Municipal Emergency Planning and Recovery Committees to align planning activities
- To share knowledge and create an environment of continuous improvement
- Develop and maintain interagency partnerships.

2 Environmental Scan

2.1 Location and Tenure

Moorabool Shire covers an area of approximately 2,110 square kilometres and is located in the Central Highlands region of Victoria, about 40 kilometres west of the Melbourne CBD. Moorabool Shire is bounded by Hepburn Shire Council in the north, Macedon Ranges Shire Council in the north-east, the Melton Shire Council in the east, the Wyndham City Council in the south-east, the Greater Geelong City Council and Golden Plains Shire Council in the south, and the Ballarat City Council in the west.

Moorabool features 18 localities, hamlets and towns that have a population less than 100 and includes the towns and rural districts of Bacchus Marsh, Ballan, Balliang (part), Balliang East, Barkstead, Barrys Reef, Beremboke, Blackwood, Blakeville, Bolwarrah, Bullarook (part), Bullarto South (part), Bunding, Bungal, Bungaree, Buninyong (part), Cargerie, Clarendon, Claretown, Clarkes Hill, Coimadai, Colbrook, Dales Creek, Darley, Dunnstown, Durham Lead (part), Elaine, Fiskville, Glenmore, Glen Park (part), Gordon, Greendale, Grenville (part), Hopetoun Park, Ingliston, Korobeit, Korweinguboora (part), Lal Lal, Leigh Creek, Lerderderg, Long Forest, Maddingley, Meredith (part), Merrimu, Millbrook, Mollongghip (part), Morrisons (part), Mount Doran, Mount Egerton, Mount Wallace, Myrning, Navigators, Parwan (part), Pentland Hills, Pootilla, Rowsley, Scotsburn (part), Spargo Creek, Springbank, Trentham (part), Wallace, Warrenheip (part), Wattle Flat (part) and Yendon.

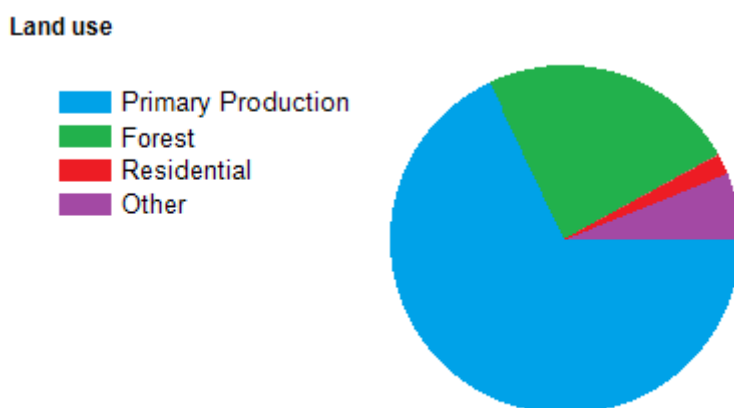


Figure 3: Breakdown of land use types in Moorabool Shire¹

2.2 Natural Environment

The Shire is environmentally diverse with topography that is characterised by great ranges, plains and rugged river gorges. These landforms provide spectacular scenery and a great variety of plants and animals. The Shire boasts many significant areas of flora and fauna including the Wombat State Forest in the north, Brisbane Ranges National Park in the south, Lerderderg State Park and the Werribee Gorge State Park in the east, and a number of regionally significant reserves. 74% of the Shire is made up of water catchment, state forest or national park.

¹ <http://profile.id.com.au>

Some of the many reservoirs in the Shire are the Lal Lal, Bostock, Pykes Creek, Moorabool and Korweinguboora. The Shire also includes three major rivers, the Werribee, Lerderderg and Moorabool.

2.3 Land Use

Moorabool Shire is predominantly a rural area, but also has substantial forests, waterways (including water catchments and storages) and rural residential areas. Most of the northern area is rural, with a large portion being forest. Much of the rural area in the Shire is used for agricultural purposes, including horticulture, sheep and beef farming, timber production and more recently, viticulture. There is also some mining.

2.4 Climate and Bushfire Season

The climate in the Moorabool area is dominated by warm dry summers and cool wet winters. In recent years there has been a significant decrease in average spring and autumn rainfalls. The bushfire season generally runs from December to April.

Prevailing weather conditions associated with the bushfire season in the Moorabool Shire area are warm to hot north westerly winds accompanied by high temperatures and low relative humidity followed by a cool south westerly change.

Under the State Government climate change projections, Moorabool Shire can expect to:

- Be hotter with the greatest increases in temperature expected in summer;
- Be drier with greatest decreases in rainfall expected in spring; and
- Have fewer rainy days but increasing rainfall intensity.

2.5 History of Fire and Ignition Causes

Wildfire

A summary of major wildfires is as follows:

Month / Year	Fire Name
February 2023	Glenmore Rd Fire
December 2015	Scotsburn Fire
February 2013	Mt Warrenheip (Bungaree) Fire
February 2013	Yendon Fire
February 2009	Muskvale Fire
January 2008	Morrisons Fire
January 2006	Anakie Fire
February 1997	Creswick Fire
February 1983	Ash Wednesday Fires (Greendale)
January 1983	Greendale

Table 1: Moorabool Shire Bushfire History

Stubble burning practices can also lead to grassland fire but with required attendance any outbreaks have been prevented from progressing to major fires.

Structure Fire

There has been only one significant structure fire within the Moorabool Shire which is the St Brigids Catholic Church, Inglis Street, Ballan in 2009.

2.6 Future Fire Management Implications

Future vulnerabilities will include larger landholdings managed by consortiums and serviced by contractors leading to declining populations in the broad acre cropping areas. This demographic combined with an aging population has seen previously robust communities devolve to more populated centres. This occurrence will potentially lead to delayed suppression activities.

Removal and harvesting of Blue Gum plantations and transition of land back to broad acre farming could transfer fire risk from forest to grass fire, leading to an increase in incidents due to greater human activity level on this land resulting in more frequent ignitions and faster moving, longer running grass fires.

An increase in individuals purchasing land for rest and relaxation purposes has resulted in more absentee landowners. These landowners traditionally have less understanding of fuel and fire management requirements, have little engagement with the community, and live externally to the municipality. This limits their capacity and ability to undertake regular fuel management works and participate in local community networks.

3 Fire Risk Management Strategies

3.1 Risk Assessment Methodologies

3.1.1 Analysis and Prioritisation of Municipal Bushfire Risk

To understand the bushfire risk within the Moorabool Shire, assessment was undertaken using the environments contained within the Victorian Fire Risk Register (VFRR) process². The last full review was undertaken in December 2022.

The VFRR application is a systematic process that identifies assets at risk from bushfire and assesses their level of risk on a consistent statewide basis using Australian Standard ISO:31000 2009 – Risk Management.

The VFRR data provided the starting point to assess the effectiveness of existing treatments and determine residual risk levels for the purpose of developing further mitigation treatments as required (refer to Appendix A.1).

3.1.2 Alignment to Regional Bushfire Risk Objectives

The plan also references treatments for the key risks in relation to bushfire as determined by the VFRR risk assessment process. The table below identifies the risks as articulated in the VFRR.

Bushfire		
Moorabool VFRR categories	VFRR Asset Class	VFRR Asset Subclass/es
Urban Interface	Human Settlement	<ul style="list-style-type: none"> ▪ Residential ▪ Other ▪ Special Fire Protection
Power Supply Communications Water Supplies and Catchments Transport	Economic	<ul style="list-style-type: none"> ▪ Agriculture ▪ Commercial ▪ Infrastructure ▪ Tourist & recreational ▪ Commercial forests ▪ Water catchments
Natural Environment	Environmental	<ul style="list-style-type: none"> ▪ Locally Important ▪ Endangered ▪ Vulnerable
	Cultural Heritage	<ul style="list-style-type: none"> ▪ Aboriginal Significance ▪ Non Indigenous ▪ Other

Table 2: VFRR priorities and their associated asset classes and subclasses

² <https://www.vfrr.vic.gov.au/>

3.1.2 Treatment of Municipal Bushfire Risk

In developing this plan, the MFMP has considered the State Emergency Management Priorities as the municipal fire management priorities. They are:

- Protection and preservation of life, including community warnings;
- Educated and informed communities;
- Protection of critical infrastructure and community assets that support community resilience;
- Protection of residential property as a place of primary residence;
- Protection of assets supporting individual livelihoods and economic production that supports individual and community financial sustainability; and
- Protection of environmental and conservation values that consider the cultural, biodiversity, and social values of the environment.

Following the State priorities, the Municipal Fire Management Plan aims to reduce the number and the severity of fires within the municipality with the intent of creating a more fire resilient community.

The State priorities are underpinned by the primacy of life, the protection of property, the economy and the environment. These priorities inform and are integrated into the primary fire risk management strategies used in this plan, which are:

- Community education and engagement;
- Hazard reduction;
- Preparedness; and
- Regulatory controls.

There are a number of State wide and municipal treatments that have been identified for each fire risk management strategy, which can be used by agencies to reduce the risk and effect of fire on the community. The generic State wide and municipal wide treatments include:

- Community education programs;
- Community education and engagement activities;
- Public awareness – multi media communications;
- Powerline hazard tree identification, management and reporting;
- Fire hazard inspection program and issue of notice;
- Compliance and enforcement of legislation;
- Bushfire management overlays;
- Building code of Australia;
- Permits to Burn; and
- Local laws.

To effectively reduce community vulnerability to fire requires more than inter-agency effort alone. It requires the facilitation of a more self-reliant and self-aware community who have the knowledge, motivation and capacity to manage the risks to reduce the threat of fire in their own communities as an active partner with fire management agencies.

3.2 Neighbourhood Safer Places – Places of Last Resort

Neighbourhood Safer Places – Places of Last Resort (NSP – PLR) are an area or premise that may, as a last resort, provide some sanctuary from the life-threatening effects of a bushfire (for example direct flame contact or radiant heat).

Details of the specific locations of NSP – PLR within the Moorabool Shire can be found in Appendix C: Neighbourhood Safer Places – Places of Last Resort and Community Fire Refuge.

3.3 Community Fire Refuge

A community fire refuge is a designated building open to the public that has been:

- purpose-built or modified in accordance with the performance requirements specified by the relevant provisions set out in Ministerial Direction No.4 under the Project Development and Construction Management Act (1994) as determined by the Building Commission
- designated as a community fire refuge in accordance with Part III of the Country Fire Authority Act 1958.

Community fire refuges are one of a number of contingency shelter options that will offer protection during the passage of a bushfire event and may be used as a last resort when other plans have failed.

Moorabool Shire Council has one Community Fire Refuge, located at the Blackwood Fire Station, located at 2 Terrill St, Blackwood.

Further information and maps of the refuge are in Appendix D.

3.4 Strategic Fire Break Definitions

Strategic Fire Suppression Lines – will have the vegetation managed from fence line to fence line where practicable. Grass will be slashed to a height of 100mm or less and elevated fine fuels will not surpass a 'high' fuel hazard rating as assessed in the Overall Fuel Hazard Assessment Guide – DELWP.³

Fire Control Lines - will have the vegetation managed 3 metres behind the guideposts where practicable. Vegetation will be slashed to a height of 100mm or less

Priority Egress/Access Roads (PEAR) - The primary function of PEAR will be to determine what treatments are required along the nominated road to maintain access and egress to an isolated community prior to or after a bushfire event.

All priority roads in the municipality will be assessed and treated in accordance with the VicRoads Road Bushfire Risk Assessment Guideline and Risk Mapping Methodology 2013.⁴

CFA Brigade Fire Prevention Works - Brigade works may enhance Strategic Fire Suppression Lines and Fire Control Lines; however the implementation is not compulsory and will be subject to seasonal conditions and Brigade resource availability.

3.5 Individual Bushfire Risk Treatments

Following amendments made to the Victorian Planning Provisions in November 2011, guidelines have been produced that allow property owners to clear vegetation on their properties to reduce the threat of bushfire to their homes.

The 10/30 and 10/50 rules enable clearing around existing buildings used for accommodation (legally erected before 18 November 2011).

For new buildings, clearing for bushfire protection will be considered through the planning permit process.

³ https://www.ffm.vic.gov.au/__data/assets/pdf_file/0005/21110/Report-82-overall-fuel-assess-guide-4th-ed.pdf

⁴ <https://www.vicroads.vic.gov.au/-/media/files/technical-documents-new/bushfire-risk-assessment-guidelines/road-bushfire-risk-assessment-guidelines-and-risk-mapping-methodology.aspx>

3.5.1 Vegetation Management Rights

Native vegetation is important to many Victorians and its removal is carefully regulated by the planning system. A vegetation management right called the '10/30 rule' is part of a suite of measures to help Victorians in areas at risk from bushfire prepare their properties.

The 10/30 rule simplifies the right to clear native vegetation around a home for bushfire protection without obtaining a planning permit.

The right allows landowners to clear without a planning permit, any vegetation:

- Including trees, within 10 metres of their home on their property;
- Except trees, within 30 metres of their house on their property; and
- Either side of their property boundary fence to a combined maximum width of four metres (with consent of the neighbouring landowner).

The '10/50 rule' enables all landowners in areas **within the Bushfire Management Overlay** to undertake the following measures for bushfire protection on their property:

- Removal, destruction or lopping of any vegetation within 10 metres of an existing building used for accommodation; and
- Removal, destruction or lopping of any vegetation, except trees, within 50 metres of an existing building used for accommodation.

3.5.2 Permits to burn under state and local law

Under the Moorabool Shire's Local Laws, a fire may not be lit or remain alight in the open air without a permit. For further details on permit conditions outside the Fire Danger Period refer to Moorabool Shire's General Local Law.⁵

During the declared Fire Danger Period, Schedule 13 permits (pursuant to Schedule 13 of the Country Fire Authority Act 1958) which were previously issued by council on behalf of CFA, are now issued via the online system, Fire Permits Victoria. This online system allows Victorians to create an account to apply for fire permits during a period when fire restrictions are in force. The website is a collaboration of Victoria's fire services (CFA, FFMV and FRV). Individuals can still apply for a permit in person by visiting a DEECA, CFA or FRV district office, or by mailing in a paper application. Permits can be issued by mail if required.

Further information, or applications for a Schedule 13 permit, may be obtained from the website <https://firepermits.vic.gov.au/>.

3.5.3 Inspection of Private Properties and Issue of Notices

The Moorabool Shire will conduct fire hazard inspections within the municipality, concentrating on high-risk areas identified in the VFRR review. Lower risk inspections usually occur in response to resident complaints. Fire prevention notices will be issued on land considered to be a fire risk.

Inspections commence from late October into November (weather dependent) and continue through the fire danger period.

3.5.4 Planning Permits

When applications are lodged with the Moorabool Shire for permits under the Planning and Environment Act 1987 for the subdivision of land or the construction of buildings in areas of high fire risk, Moorabool Shire Council may give consideration to the following documents in determining any such application, and also refer the application to the relevant fire agencies for comment:

- Relevant guidelines for assessing applications on land in bushfire-prone areas
- Moorabool Planning Scheme

⁵ <https://www.moorabool.vic.gov.au/About-Council/Policies-plans-and-strategies/Local-Law-Adopted-2019>

- Building Act 1993 and the Building Regulations 2006
- Other relevant documentation

3.6 Cross Boundary Arrangements

Current identified cross boundary and contiguous risk from bushfire for the Moorabool Shire municipal area includes:

Risk	Adjacent Municipality	Strategy
Wombat State Forest/ Lerderderg State Park and adjacent private bushland	Hepburn/ Macedon Ranges	Ensure alignment of planning and prevention activities in relation to these risks are discussed and coordinated with relevant municipalities. Ensure that these arrangements and plans are included in relevant MFMPs.
Brisbane Ranges (Public & Private land)	Golden Plains/City of Greater Geelong	
Pyrites (Public & Private land)	Macedon Ranges/Melton	

Table 3: Moorabool Shire Cross Boundary Risks

It is also recognised that agencies and municipalities have existing planning relationships across multiple boundaries and that these planning arrangements need to be considered when developing future plans.

Moorabool Emergency Management and Fire Management staff are members of the Grampians Municipal Emergency Management Enhancement Group (MEMEG), Central MEMEG and South West MEMEG; this ensures networking and planning across these bushlands continues.

Appendix A: Agency Work Plans

2022-2023 Joint Fuel Management Plan: [Grampians JFMP \(ffm.vic.gov.au\)](http://ffm.vic.gov.au)

Strategic Fire Breaks table – agreed agency workplan: [Strategic Fire Breaks Table Agreed Agency Workplan](#)

B.1 List of fire access tracks

All Nations Gully Mt Egerton
Angees Road (Part DEECA) Elaine/Morrison's
Barrys Road (off Bush Inn) Wattle Flat
Bradys Lane Greendale
Callaghans Lane Gordon
Cricket Ground Track (topend) Blakeville
Thomas Court Gordon
Scenic Court Gordon
Cockatoo Road Lal Lal
Coles Lane Greendale
Greystones (Private Property Rowsley)
Hopgoods Road Clarendon
Long Gully Road Greendale
Mystery Lane Mt Doran
Racecourse Lane, Elaine Morrison's (off Angees Road)
Seerys Road, Coimadai
Skeltons Road Scotsburn
Skinnners Road, Blackwood
Swans Road Darley
Ted Lyons Road, Navigators
Wattle Gully Road Greendale
Yuulong Road Scotsburn (undeveloped section up to Yendon No. 2)

A.2 Strategic Fire Breaks table – agreed agency workplan

PRIORITIES AND STRATEGIES IDENTIFICATION AND PREPARATION OF STRATEGIC FIRE SUPPRESSION

PRIORITY ACCESS EGRESS ROADS (Indicated in PINK on map)

ROAD	Action	Responsible Authority	Treatment
Ballan - Daylesford Rd (S. Conroy Lane to Shire Boundary)	Works in accordance with VicRoads Road Fire Risk Assessment Guidelines	VicRoads	Works in accordance with VicRoads Road Fire Risk Assessment Guidelines
Blakeville Road	Tree maintenance	MSC	Arborist inspection and associated works to be undertaken triannually commencing in 2013 – completed 2020
Camerons Road	Tree maintenance / Slashing	MSC Road Maintenance Plan	Trimming back for safety clearance
Long Forest Road	Tree maintenance	MSC Road Maintenance Plan	Trimming back for safety clearance
Myrniong - Trentham Road (Greendale to Blackwood)	Works in accordance with VicRoads Road Fire Risk Assessment Guidelines	VicRoads	Works in accordance with VicRoads Road Fire Risk Assessment Guidelines
Myrniong - Trentham Road (Greendale to Shutters Avenue)	Works in accordance with VicRoads Road Fire Risk Assessment Guidelines	VicRoads	Works in accordance with VicRoads Road Fire Risk Assessment Guidelines
Russells Road	Tree maintenance / Slashing	MSC Road Maintenance Plan	Trimming back for safety clearance
Seerey's Track	Tree maintenance / Slashing	MSC Road Maintenance Plan	Trimming back for safety clearance

STRATEGIC FIRE SUPPRESSION ROADS

The following strategic firebreaks shall be developed and/or maintained throughout the shire (**Indicated in BLUE on the map**):

ROAD	From	To	Action	Responsible Authority	Treatment
Bacchus Marsh – Balliang Road	McCormacks Road	Shire Boundary (Wyndham)	Slashing	MSC	Full width where practicable
Bacchus Marsh - Geelong Road	Tilleys Road Bridge	Sharkeys Road (Shire Boundary)	Slashing	VicRoads	Full width where practicable
Bacchus Marsh - Gisborne Road	Lerderderg Gorge Road	Shire Boundary (Macedon Ranges)	Slashing	VicRoads	Full width where practicable
Ballan - Daylesford Road	Western Freeway Ballan	S Conroy Lane	Slashing	VicRoads	Full width where practicable
Ballan - Greendale Road	Western Freeway	High Street	Slashing	MSC	Full width where practicable
Ballarat - Daylesford Road	Shire Boundary (Ballarat)	Shire Boundary (Hepburn)	Slashing	VicRoads	Full width where practicable
Boundary Road	Bamganie Road	Midland Highway	Slashing	MSC	Full width where practicable
Blakeville Road	Ballan-Greendale Road	Georges Lane	Slashing	MSC	Full width where practicable
Brisbane Road	Bacchus Marsh – Balliang Road	Brisbane Ranges	Slashing	MSC	Full width where practicable
Bungaree - Creswick Road	Western Freeway	Shire Boundary (Hepburn)	Slashing	Vic Roads	Full width where practicable
Corbetts Road	Old Western Highway	Cartons Road	Slashing	MSC	Full width where practicable

ROAD	From	To	Action	Responsible Authority	Treatment
Denherts Road	Moorabool West Road	Ballan-Daylesford Road	Slashing	MSC	Full width where practicable
Diggers Rest – Coimadai Road	Gisborne Road	Shire Boundary (Melton)	Slashing	Vicroads	Full width where practicable
Elaine – Morrisons Road-	Elaine-Egerton Road	Morrisons Fire Station	Slashing	MSC	Full width where practicable
Geelong - Ballan Road	Western Freeway	Lennox Lane	Slashing	VicRoads	Full width where practicable
Glenmore Road	Spring Creek (Yaloak Vale)	Bacchus Marsh – Balliang Road	Slashing (if no environmental burn undertaken)	MSC	Full width where practicable (if no environmental burn undertaken) as confirmed at December 2012
Gordon – Egerton Road	Nightingale Street Gordon	Malones Road Mt Egerton	Slashing	MSC	Full width where practicable
Guillines Road <i>(Maddingley Brown Coal Fire Preparedness)</i>	Kerrs Road	Rowsley-Station Rd	Slashing	MSC	Full width where practicable
Kerrs Road <i>(Maddingley Brown Coal Fire Preparedness)</i>	East Maddingley Rd	Guillines Rd	Slashing	MSC	Full width where practicable
High Street (Prince Street)	Ballan-Greendale Road	Wombat State Forest boundary	Slashing	VicRoads	Full width where practicable
Myrniong - Trentham Road	Ballan-Greendale Road	Pykes Creek Road	Slashing	VicRoads	Full width where practicable
Midland Highway	Yendon No. 2 Road	Shire Boundary (Golden Plains)	Slashing	VicRoads	Full width where practicable
Moorabool West Road	Old Corbetts Road	Vinecombes Road	Slashing	MSC	Full width where practicable

ROAD	From	To	Action	Responsible Authority	Treatment
Mt Wallace – Ballark Rd	Ballan-Meredith Road	Bungeeltap South Road	Slashing	MSC	Full width where practicable
Mt. Blackwood Road	Old Western Highway	Greendale-Trentham Road	Slashing	MSC	Full width where practicable
Old Melbourne Road –	Dunnstown-Yendon Road	Lesters Road	Slashing	MSC	Full width where practicable
Old Melbourne Road	Dunnstown-Yendon Road	Kilarney Road	Slashing	MSC	Full width where practicable
Springbank Road	Bungaree-Creswick Road	Old Corbetts Road	Slashing	MSC	Full width where practicable
Stone Hut Lane (including Western Park Road)	Ballan-Daylesford Road	Western Park Road	Slashing	MSC	Full width where practicable
Western Freeway - Melton to Ballarat	Shire Boundary (Melton)	Shire Boundary (Ballarat)	Slashing	VicRoads	Full width where practicable
Western Park Road	Blakeville Road	Stonehut Lane	Slashing	MSC	Full width where practicable
Yendon – Egerton Road	Yendon-Lal Lal Road (rail crossing)	Ballan-Egerton Road	Slashing	MSC	Full width where practicable

FIRE CONTROL LINE ROADS (indicated in GREEN on map)

ROAD	TO	FROM	TREATMENT
Acacia Avenue, Dales Creek	Dales Creek Avenue	Messmate Street	2.1 metre Roadside Maintenance Cut)
(Bacchus Marsh – Werribee Road) (from Geelong-Bacchus Marsh Rd to Shire Boundary) (VICROADS)	Geelong-Bacchus Marsh Road	Shire Boundary (Wyndham)	2.1 metre Roadside Maintenance Cut (Environmental Burn Golden Sun Moth)
Ballan-Egerton Road	Yendon-Egerton Road	Geelong-Ballan Road	2.1 metre Roadside Maintenance Cut
Old Melbourne Road	Gordon Cemetery	Geelong-Ballan Road	2.1 metre Roadside Maintenance Cut
Ballan - Meredith Road (Ballan Egerton Rd to Bungeeltap Sth Rd)	Ballan-Egerton Road	Bungeeltap South Road	2.1 metre Roadside Maintenance Cut (Environmental Burn)
Bences Road	Diggers Rest Road	end	2.1 metre Roadside Maintenance Cut
Britts-Howards Road	Old Melbourne Road	Torpys Road	2.1 metre Roadside Maintenance Cut
Buckleys Road	Gisborne Road	Bences Road	2.1 metre Roadside Maintenance Cut
Bungaree-Wallace Road (VICROADS)	Western Freeway	Ormond Road	2.1 metre Roadside Maintenance Cut
Bungeeltap South Road	Ballan-Meredith Road	Mt Wallace-Ballark Road	2.1 metre Roadside Maintenance Cut and maintain break with spray – Environmental Burn
Cowans Drive, Dales Creek	Dales Creek Avenue	141 Cowans Drive	2.1 metre Roadside Maintenance Cut
Cummings Road	Geelong-Bacchus Marsh Road	Aerodrome Road	2.1 metre Roadside Maintenance Cut
Dales Creek Avenue, Dales Creek	Greendale-Trentham Road	115 Dales Creek Ave	2.1 metre Roadside Maintenance Cut
Dog Trap Gully Road	Ironbark Road	Glenmore Road	2.1 metre Roadside Maintenance Cut
East Maddingley Road (Maddingley Brown Coal Fire Preparedness)	Tilleys Road	Kerrs Road	2.1 metre Roadside Maintenance Cut
Egerton – Ballark Road (from Fergusons Lane to Egerton Bungeeltap Road)	Egerton-Bungeeltap Road	Fergusons Lane	2.1 metre Roadside Maintenance Cut and maintain break for Environmental Burn
Elaine – Blue Bridge Road, Mt Doran	Midland Highway	Clarendon-Bluebridge Road	2.1 metre Roadside Maintenance Cut

Elaine – Mt Mercer Road	Midland Highway	Meredith-Mt Mercer Road	2.1 metre Roadside Maintenance Cut
Elaine - Egerton Road	Midland Highway	Angees Road	2.1 metre Roadside Maintenance Cut
Footes Lane	Bacchus Marsh-Balliang Road	End	2.1 metre Roadside Maintenance Cut
Garrards Lane	Western Freeway	End	2.1 metre Roadside Maintenance Cut
Geelong-Ballan Road (VICROADS)	Lennox Lane	Shire Boundary (Golden Plains)	2.1 metre Roadside Maintenance Cut
Glenmore Road	Geelong-Ballan Road	Spring Creek (Yaloak Vale)	2.1 metre Roadside Maintenance Cut and maintain break for Environmental Burn
Glenmore Road	Bacchus Marsh-Balliang Road	Geelong-Bacchus Marsh Road	2.1 metre Roadside Maintenance Cut and maintain break for Environmental Burn
Grace Road	Martin Street	Greendale-Trentham Road	2.1 metre Roadside Maintenance Cut
Greendale-Trentham Road (VICROADS)	Blackwood Township	Shire Boundary (Hepburn)	2.1 metre Roadside Maintenance Cut
Horsehill Road	Midland Highway	Narmbool Road	2.1 metre Roadside Maintenance Cut
Horsehill Road South	Narmbool Road	Elaine-Mt Mercer Road	
Ingliston Road (from Ballan township to Settlement Road)	Old Melbourne Road	Ingliston-Settlement Road	2.1 metre Roadside Maintenance Cut for Environmental Burn
Jensz Road	Aerodrome Road	Glenmore Road	2.1 metre Roadside Maintenance Cut
Lerderderg Gorge Road	Gisborne Road	McKenzie Falls carpark	2.1 metre Roadside Maintenance Cut
Long Point Road	Mt Blackwood Road	Smiths Lane	2.1 metre Roadside Maintenance Cut
Martin Street, Blackwood	Greendale-Trentham Road	Grace Road	2.1 metre Roadside Maintenance Cut
Morrison Lane	Mt Blackwood Road	Myrniong-Korobeit Road	2.1 metre Roadside Maintenance Cut
Mt Wallace – Ballark Road	Bungeeltap South Road	Geelong-Ballan Road	2.1 metre Roadside Maintenance Cut
Muir Lane	Morrison Lane	Mt Blackwood Road	2.1 metre Roadside Maintenance Cut
Murphys Road	Midland Highway	Elaine-Bluebridge Road	2.1 metre Roadside Maintenance Cut
Myrniong-Korobeit Road	Old Western Freeway	Greendale - Myrniong Road	2.1 metre Roadside Maintenance Cut

Nerowie Road (to Nortons Road)	Geelong-Bacchus Marsh Road	Nortons Road	2.1 metre Roadside Maintenance Cut for Environmental Burn
Old Geelong Road, Ballan	Inglis Street	Geelong-Ballan Road intersection	2.1 metre Roadside Maintenance Cut
Old Western Highway, Myrniong	Muddy Lane	Western Freeway	
Old Western Highway, Myrniong	Greendale-Trentham Road	Myrniong-Korobeit Road	2.1 metre Roadside Maintenance Cut
Old Western Highway, Gordon	Main Street (Gordon Hotel)	Butter Factory Road	2.1 metre Roadside Maintenance Cut
Ormond Road	Western Freeway	Barkstead Road	2.1 metre Roadside Maintenance Cut
Paces lane	Dog Trap Gully Road	Bacchus Marsh-Balliang Road	2.1 metre Roadside Maintenance Cut
Parwan South Road	Parwon-Exford Road	Nerowie Road	2.1 metre Roadside Maintenance Cut
Parwan-Exford Road	Geelong-Bacchus Marsh Road	Shire Boundary (Melton)	2.1 metre Roadside Maintenance Cut
Pattinson Lane	Myrniong-Korobeit Road	Mt Blackwood Road	2.1 metre Roadside Maintenance Cut
Pine Court, Dales Creek	Off Dales Creek Avenue	end	2.1 metre Roadside Maintenance Cut
Portland Flat Road	Gordon-Egerton Road	Old Melbourne Road	2.1 metre Roadside Maintenance Cut
Purcells Lane	Mt Blackwood Road	Long Point Road	2.1 metre Roadside Maintenance Cut
Ralstons Road	Bungaree-Creswick Road	Shire Boundary (Longs Hill Road)	2.1 metre Roadside Maintenance Cut
Settlement Road, Mt Doran	Clarendon-Blue Bridge Road	Midland Highway	2.1 metre Roadside Maintenance Cut
Swans Road	Links Road	Lerderderg State Park	2.1 metre Roadside Maintenance Cut
Tilleys Road <i>(Maddingley Brown Coal Fire Preparedness)</i>	Geelong BMarsh Road	East Maddingley	2.1 metre Roadside Maintenance Cut
Ti Tree Road	Tennis Court Road	Dunnstown-Yendon Road	2.1 metre Roadside Maintenance Cut
Wells Road	O'Connell Street	Lerderderg Park Road	2.1 metre Roadside Maintenance Cut
Yankee Flat Road	Ballarat-Navigators Road	Yendon No. 1 Road	2.1 metre Roadside Maintenance Cut
Yendon – Lal Lal Road	Yendon-Egerton Road	Lal Lal Falls Road	2.1 metre Roadside Maintenance Cut
Yendon No. 2 Road	Midland Highway Shire Boundary	Yendon-Lal Lal Road	2.1 metre Roadside Maintenance Cut

CFA Roadside Fire Prevention Works

Environmental Burns (subject to seasonal conditions and Brigade resource availability) (indicated in RED on map)

Road	Rating	Treatment	Burnt By	Environmental Status	Additional Roadside Treatment
Nerowie Rd From Bacchus Marsh Geelong Rd to Shire Boundary	High	Burn	CFA	Burn for fire prevention - Environmental Significant area	Maintenance of Break (Council environmental to arrange)
Glenmore Road Bacchus Marsh Balliang Rd to Geelong – Bacchus Marsh Road) Both Sides	High	Burn	CFA	Burn for fire prevention - Environmental Significant area (alternate sides)	Maintenance of Break (Council Environment reviewing)
Egerton - Ballark Road (from Mt Egerton Township to Fergusons Lane)	High	Burn	CFA	Burn for fire prevention - Environmental Significant area	Maintenance of Break (Council Environmental to arrange)
Ballan - Meredith Road (Ballan Egerton Rd to Bungeeltap Sth Rd)	High	Burn	CFA	Part Burn for fire prevention – Environmental Significant area	Maintenance of Break (Council Environment to arrange - Spraying Council Contractor)
Bungeeltap South Road	Medium	Burn	CFA	Burn for fire prevention - Environmental Significant area	Maintenance of Break (Council Environmental to arrange - Spraying Council Contractor)
Glenmore Road (Yaloak Vale to Geelong-Ballan Road	High	Burn	CFA	Burn for fire prevention - Environmental Significant area	Maintenance of Break (Council Environmental fund)
Ingliston Road (Ballan Township to Settlement Road)	High	Burn	CFA	Burn for fire prevention - Environmental Significant area (alternate sides)	Maintenance of Break (external)
(Bacchus Marsh – Werribee Road) (from Geelong-Bacchus Marsh Rd to Shire Boundary)	High	Burn	CFA	Burn for fire prevention where practical - Environmental Significant area – Golden Sun Moth (VicRoads Road)	Maintenance of Break (VicRoads to arrange)

CFA Roadside Fire Prevention Works

Burns (subject to seasonal conditions and Brigade resource availability)

Location	Location Description	Brigade ID	Map	Action Type ID	Pework required
Flacks Lane	From Racecourse Rd to Ballan Daylesford Rd	BALLAN	Region 15 Mapbook 442C	Burn	Nil
Andrews Lane	Between West Park Rd and Ballan Greendale Rd	BALLAN	Region 15 Mapbook 442C	Burn	Nil
Dehnerts Rd	From Vinecombes Lane to Racecourse Rd	BALLAN	Region 15 Mapbook 442C	Burn	Nil
Ingliston Rd	Between Railway Crossing Township to Settlement Rd	BALLAN	Region 15 Mapbook 442 F	Burn	Environmental area - slash fenceline if required 2.5 metre(Council Environmental to arrange)
Stone Hut Lane	From Racecourse Rd to Western Park Rd	BALLAN	Region 15 442C	Burn	Nil
Racecourse Rd	From Flacks Rd to Dehnerts Rd	BALLAN	Region 15 442C	Burn	Nil
Ballan Grasslands	54 Haddon Drive	BALLAN		Burn	Nil - Broad Acre
Cemetery Burn	Byers Rd, Blackwood	BLACKWOOD		Burn	Nil - Broad Acre
Dales Creek	Dales Creek Avenue	BLACKWOOD/GREENDALE		Burn	Nil - Council land
Blue Bridge Rd	North From Township to Mt Doran Rd	ELAINE	Region 15 483A	Burn	Nil
Settlement Rd	North from township to Elaine Clarendon- Blue Bridge Road	ELAINE	Region 15 483A	Burn	Nil

Location	Location Description	Brigade ID	Map	Action Type ID	Pework required
Elaine Railway	From Elaine to Elaine - Blue Bridge Road Clarendon	ELAINE	Region 15 483 A	Burn	Nil
Ballan Greendale Rd	From Grid Point 583389 to Township Boundary (from Andrews Lane to the Greendale Township_	GREENDALE	Region 15 Map 442C	Burn	Nil
Coles lane	Between Darcey Tk and Lidgetts Lane	GREENDALE	Region 15 442C	Burn	Nil
Myrniong – Korobeit Road	From Hastings Rd east to the Brigade Boundary	GREENDALE	Region 15 442 D	Burn	Nil
Myrniong - Greendale Rd C138	From Speed Signs (Lacote Road) at Greendale to 300 metres south of Fowlers Lane	GREENDALE	Region 15 Map 442 D	Burn	Nil
Bradys Lane	between Greenhills Road and Egans Reserve	GREENDALE	Region 15 SV Map 6441	Burn	Nil
Morrison's Elaine Rd	From Tableland Rd to Lal Lal Rd East West (between Forest Road and Lal Lal Road)	MORRISONS & DISTRICT	Region 15 Map 483 430151	Burn	Nil
Forest Road	From Morrison/Elaine Road north/south	Morrison & District	Page 6605 551-155	Burn	Nil
Around Fire Shed	West of fire shed approx. 2 acres	Morrison & District	Page 6605 – 440-151	Burn	Nil
Yendon Lal Lal Rd	From Township to Lal Lal Clarendon Rd	MT BUNINYONG	Region 15 Map 440 6	Burn	Nil
Yendon Mt Egerton Rd	From Railway crossing to the West Moorabool river	MT BUNINYONG	Region 15 map 440 D	Burn	Nil
Navigators Rd	From Township to Navigators Parallel with railway on the west side	MT BUNINYONG	Region 15 Map 440 D	Burn	Nil

Location	Location Description	Brigade ID	Map	Action Type ID	Prework required
Wiggins Road	200 Wiggins Road	MT BUNINYONG		Burn	Broad acre
Mt Egerton Ballark Road	Mt Egerton Bungeeltap Road to Ferguson Lane	MT EGERTON	Region 15 Map 442	Burn	Environmental (MSC Environmental Dept. liaising with CFA and Landcare and arranging) (Council Environmental to arrange)
Mt Egerton Yendon Road	From Sharrocks Road to West Moorabool River	MT EGERTON	Region 15 Map 442 423310	Burn	Nil
Bungeel Tap South Rd	From Mt Wallace Ballark Rd north to Banks Rd	MT WALLACE	Region 15 Map 484 A 515189	Burn	Maintenance of Break (Spray) (Council Environmental to arrange)
Mt Wallace Glenmore Rd	Between Geelong Ballan Rd and Cut Hill (Glenmore Road)	MT WALLACE	Region 15 Map 442 560222	Burn	Nil
Ballan Meredith Rd	From Mt Wallace Ballark Road to Mt Egerton Ballan Rd on the East side	MT WALLACE	Region 15 Map 442 530230	Burn	Maintenance of Break (Spray) (Council Environmental to arrange)
Bacchus Marsh Gisborne Rd	From Diggers Rest Rd to Ratcliffe Tk	COIMADAI	Central Map 6442 761414	Burn	Nil
Ballark-Egerton Rd	From Ballan Meredith Rd to top Ballark Hill	MORRISONS& DISTRICT	Map 6605 495173 to 476178	Burn	Fenceline slash 3 m both sides

Location	Location Description	Brigade ID	Map	Action Type ID	Prework required
					Prefer to spray and burn break earlier may require Assessment to allow this (Council Environmental to arrange)
Smiths Lane	Ballan Geelong Rd to Banks Lane	MT WALLACE	Map 6524 552227 to 540231	Burn	Nil
Greendale Trentham Rd	Maddisons Lane To the Greendale Roundabout	GREENDALE			Nil
Mt Blackwood Rd	Muir's Lane to Lohs Lane	MYRNIONG	Map 6441 665375 to 663394	Burn	Nil
Muir's Lane	Morrison's Lane to Blackwood Rd	MYRNIONG	Map 6441 665375 to 651376	Burn	Nil
Myrniong Korobeit Rd	Morrison's Lane West to the Brigade Boundary	MYRNIONG	Map 6441 648367 to 634376	Burn	Nil
Nerowie Road	Bacchus Marsh Geelong Road to Shire Boundary	PARWAN		Burn	Council environmental to do breaks (refer red section)
Parwan Rail	Parwan-Exmouth Rd	PARWAN/VLINE		Burn	
Glenmore Rd	Bacchus Marsh – Balliang Rd to Geelong-Bacchus Marsh Rd	PARWAN		Burn	Council environmental to do breaks (refer red section)

Appendix B: Statutory Audit Obligations

Hazard Trees Identification and Notification Procedures

Hazard Tree Identification and Notification Procedures

Municipal Emergency Management Planning Committees are required by legislation to specify procedures and criteria for identifying trees likely to fall onto or come into contact with electrical lines, and outline procedures for notifying responsible persons of hazard trees relating to electrical lines for which they are responsible.

This appendix addresses these requirements by outlining the procedures to be followed in the Moorabool Shire relating to hazard trees and electrical lines.

Legislative requirements

Section 86B of the **Electricity Safety Act 1998 (Vic)** (the Act) directs that Municipal Emergency Management Planning Committees (MEMPCs) must, in a Municipal Emergency Management Plan (MEMP) or associated sub-plan prepared under Section 60ADB or 60AN of the **Emergency Management Act 2013 (Vic)**, specify:

1. The procedures and criteria for identifying trees that are likely to fall onto or come into contact with an electric line (hazard trees)
2. The procedures for the notification of responsible persons of hazard trees in relation to electric lines for which they are responsible.

This requirement is included in the **Electricity Safety (Electric Line Clearance) Regulations 2020 (Vic)** (the Regulations) **Schedule 1 – Code of Practice** (the Code) clause 9.

Further, Regulation 9 requires responsible persons (other than private persons) with responsibility for electric line clearance to maintain an Electric Line Clearance Management Plan (ELCMP). This includes Council for any urban areas declared under Part 8, Division 1, Section 81 of the Act. The only declared urban area in Moorabool Shire is the Bacchus Marsh township as it was in 1986.

Definition of “hazard tree”

Hazard trees are defined in the Act as “trees that are likely to fall onto or come into contact with an electric line”.

The Regulations state that the person responsible for a hazard tree (see Responsibilities below) may cut or remove hazard trees if identified by a person with appropriate training and expertise (e.g., a suitably qualified arborist) who has:

- Assessed the tree having regard to foreseeable local conditions
- Advised the responsible person that the tree, or any part of the tree, is likely to fall onto or otherwise come not contact with an electric line.

Due to legal requirements which require a clearance space to be maintained around an electric line, hazard trees are usually located outside the regulated clearance space. Despite being outside the clearance space, the tree may still have the potential to contact the line due to its size or because of a structural fault or weakness which renders part, or all, of the tree likely to contact or fall onto the line.

Responsibilities

The Act designates the person responsible for maintaining vegetation and clearance space around electric lines, including keeping the whole or any part of a tree clear of the line, as the **responsible person**.

Responsibility is allocated between distribution businesses and other owners of electricity infrastructure, land owners and occupiers for clearance of private power lines, public land managers

where they are identified as the responsible person such as municipal councils and the Department of Energy, Environment, and Climate Action (DEECA).

There is only one electricity distribution business in the Moorabool Shire (Powercor).

- Powercor
 - Powercor, as the distribution company servicing the Moorabool Shire, has responsibility under the Regulations for keeping “the whole or any part of a tree clear of an electric line within its distribution area” to maintain the required minimum clearance space (MCS – Code clause 2). The exceptions are where another person is responsible for the maintenance of the line, or the keeping clear of trees from the line.
- Council
 - Council is responsible for trees on public land within their municipalities, for which they are the land manager, where these are also within a Declared Area under the Act. The only Declared Area in the Moorabool Shire is the Bacchus Marsh township as it was in 1986. Refer to the Moorabool Electric Line Clearance Management Plan for detailed information on which areas are Council’s responsibility and the plan to undertake inspections and clearing work.
- Other organisations and private persons
 - Private persons have responsibility for ensuring vegetation is kept clear of privately-owned electric lines, including service cables when the tree is on the same property as the service cable supplying that property, with works undertaken by a suitably qualified arborist.
 - Private persons and other organisations have electric line clearance responsibilities for electric lines they own located on land they manage. In the Moorabool Shire these include, but are not limited to:
 - Electricity customers with private electric lines.

Procedures and criteria for identification of hazard trees

In the course of their duties, potentially hazardous trees may come to the attention of members of the entities represented on the Municipal Fire Management Planning Committee (the Committee), staff of the distribution business, or other persons, including members of the public.

A range of factors indicate a tree may pose a hazard of falling onto, or coming into contact with, an electric line. Some of these factors will be obvious when looking at the tree, but others may only be apparent upon assessment by a person with specific expertise and training, such as an arborist.

The following criteria may assist in identifying a hazard tree:

- The size of the tree suggests it is likely to come into contact with an electric line (e.g. because it appears to be encroaching or growing into the line clearance space)
- There is an excessive lean on the tree, or branches are hanging off the tree, and the tree is in proximity to an electric line
- The size or appearance of the tree suggests it could come into contact with an electric line, including under foreseeable local conditions.

If a potentially hazardous tree is identified, the notification procedure outlined below should be followed. Where a responsible person becomes aware of a potentially hazardous tree for which they have responsibility, they must follow their own internal procedure and the notification procedure described below does not apply.


Procedures and criteria for notification of hazard trees

To ensure information regarding potentially hazardous trees is captured in an efficient manner and referred to the responsible person for action, the following procedure for notification of hazards trees shall be followed:

1. The person with responsibility for the greatest percentage of electric lines within the municipality (the **primary responsible person**) is Powercor, and therefore the person to whom potentially hazardous trees should be reported.
2. Where any person becomes aware of, or receives a report of, a potentially hazardous tree within the municipality, this should be referred to Powercor. Where the Committee becomes aware of, or receives a report of, a potentially hazardous tree within the municipality, this must be referred to Powercor.
3. Complete the Municipal Hazard Tree Notification Form and return it to the Primary Responsible Person Representative listed below.
4. If gathering information for the completion of the form, collect the following information:
 - a. Contact name, email, phone, organisation and role (if representing an organisation) of the reporter
 - b. Location of the tree – street address, pole number, voltage (if known), LIS number (on a large silver or yellow plate on the pole)
 - c. Tree details – number of trees or limbs impeding on the electric line, species of tree (if known)
 - d. Current status of the tree (e.g. leaning towards electric line, would strike electric line if it fell, high risk of bushfire ignition etc)
 - e. Reason for hazard classification (e.g. leaning, root rot, bifurcation, tree damage etc)
 - f. Please send through any digital images if taken.
5. Powercor as the Primary Responsible Person will triage the case and, if they are not the person responsible for the tree that may be hazardous, will take all necessary steps to advise the person responsible for the tree.

Primary responsible person representative

All reporting of hazard trees should be directed to Powercor in the first instance, using the form and details below.

Agency name	Powercor
Position title of contact person	Hazard Tree Coordinator
Municipal Hazard Tree Notification Form	Microsoft Word - Council tree hazard notification form.docx (powercor.com.au)
	 Adobe Acrobat Document
	Also in Crisisworks Library
Contact phone – for urgent cases	[Redacted]
Email address – to return forms to	[Redacted]
After hours number	13 24 12 (Powercor) 13 12 80 (Citipower)

If Powercor determines that the required works are to be carried out by Council (e.g. in cases where the hazard tree is located in the Declared Urban Area in Bacchus Marsh where Council has responsibility for tree clearance), they will contact Council's Manager Operations. Contact details are as follows:

Agency name	Moorabool Shire Council
Position title of contact person	Manager Operations
Contact phone	(03) 5366 7100

Email address	info@moorabool.vic.gov.au
---------------	--

After hours number	[Redacted]
--------------------	------------

Refer to the Municipal Hazard Tree Notification Procedure flowchart at the end of this document.

Reporting timelines

Powercor should provide reports to the relevant responsible person as soon as practicable.

In circumstances where:

- The potentially hazardous tree is located within a high bushfire risk area (as per Section 80 of the Act) and is reported during the Fire Danger Period declared under the *Country Fire Authority Act 1958*, or
- The report indicates that there is an imminent danger that the tree will contact or fall onto lines as a result of minor environmental changes

The potentially hazardous tree must be referred to the relevant responsible person for action as soon as possible, and by close of the next business day.

Each responsible person (other than the primary responsible person) must provide Powercor with contact details of the person (position title) to whom reports should be provided. It is the responsibility of each responsible person to ensure that Powercor is provided with up-to-date contact details.

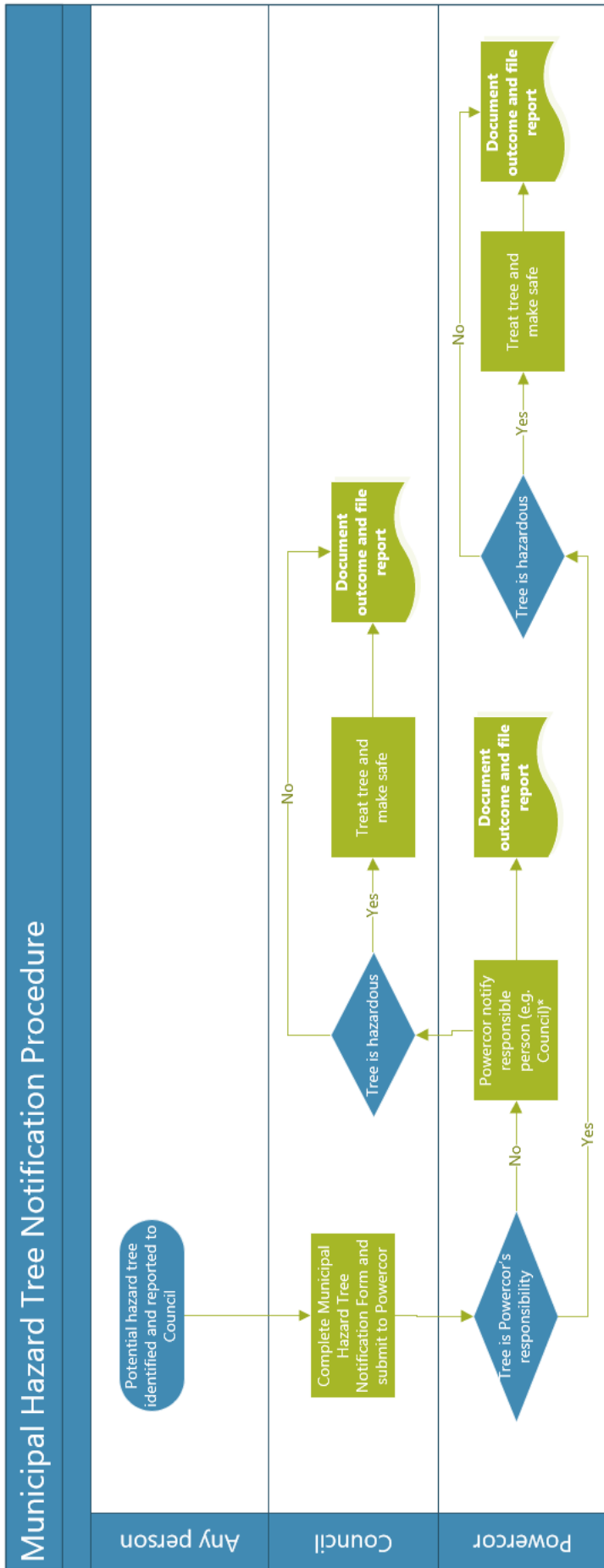
Register

It is recommended that Powercor maintain a register in which all notifications are recorded together with the date of receipt of the notification, and when applicable the date the notification was reported to the responsible person.

It is recommended that responsible persons also maintain a register of notifications received of hazardous trees for which they are the responsible person.

Primary responsible person consultation

The Committee notes that Powercor as the primary responsible person has been consulted in relation to the development of these procedures.

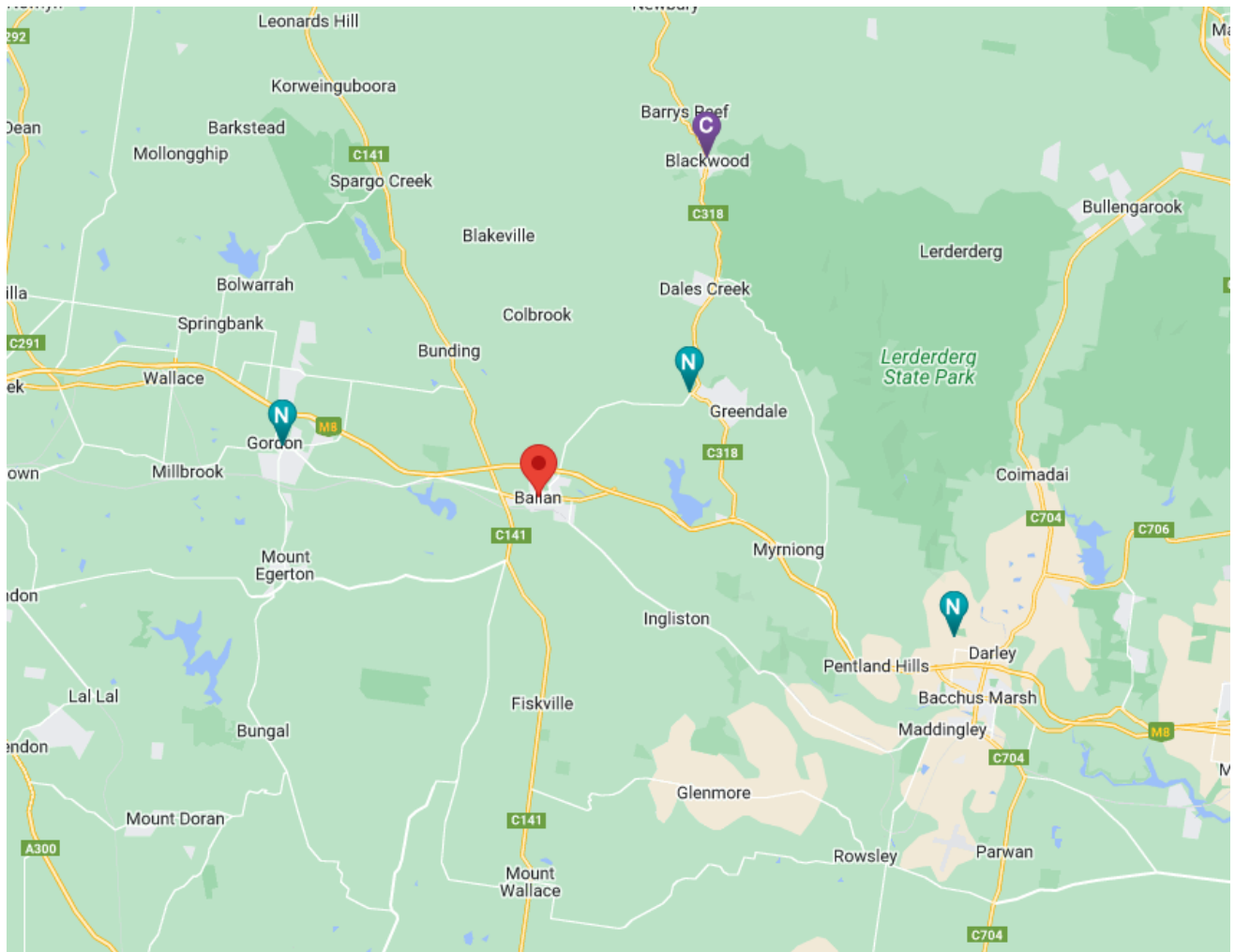


Appendix C: Neighbourhood Safer Places – Places of Last Resort and Community Fire Refuge

D.1 Neighbourhood Safer Places – Places of Last Resort:

Township/Suburb	Street	Location
Gordon	Main Street (opposite Russell Street)	Community Hall
Greendale	Greendale-Ballan Road (entry via Bradys Lane)	Egans Reserve
Darley	Wittick Street (opposite Lewis Street) Darley	Darley Civic & Community Hub Oval

For a locality reference of the NSP-PLR in the Moorabool Shire refer to the CFA website:
<http://www.saferplaces.cfa.vic.gov.au/cfa/search/default.htm>



N: Neighbourhood Safer Places – Places of Last Resort

C: Community Fire Refuge (see Appendix D.1)

C.2 Community Fire Refuge

Township/Suburb	Street	Location
Blackwood	2 Terrill St, Blackwood	Blackwood CFA station



Municipal Fire Management Plan - Blackwood Community Fire Refuge – Amended endorsed 12/11/13

Treatments

Endorsed at MFMP 12 November 2013

Appendix D: Roads (Vegetation Management)

Inspect and identify roadside trees that may present a safety risk to motorists by falling across the road in high wind events tri-annually from May 2013. i.e. May 2016, May 2019 etc.

This work is dependent on ongoing policy and funding from the State Government.

Grass around CFA Fire Station to be maintained at 100mm during Declared Fire Season

Grass and vegetation maintained during declared fire season:

Road Section	Road Length (m)
Myrning -Trentham Road (locally known as Greendale – Trentham Rd) From: Western Freeway To: Wightmans Track, Barrys Reef	20,313
Caravan Park Road, Blackwood - From: Golden Point Road To: Caravan Park entry (encompassing entire section of road)	516
Simmons Reef Road, Blackwood - From: Greendale-Trentham Road To: The end of sealed section (encompassing entire section of sealed road)	2030
Old Golden Point Road, Blackwood - From: Greendale-Trentham Road To: Golden Point Road	989
Byres Road, Blackwood - From: Old Golden Point Road To: Golden Point Road	839
Terrill Street, Blackwood - From: Greendale-Trentham Road To:Byres Road	201
Golden Point Road, Blackwood - From: Greendale-Trentham Road To: Elgin Street (end of sealed section)	1414
Martin Street, Blackwood - From: Greendale-Trentham Road, northbound To: Grace Road (entire sealed road section)	513

Appendix E: Acronyms

CFA	Country Fire Authority
CHW	Central Highlands Water
DET	Department of Education and Training
DEECA	Department of Energy, Environment and Climate Action
FFMvic	Forest Fire Management Victoria
FRV	Fire Rescue Victoria
HVP	Hancock Victorian Plantations
MEMP	Municipal Emergency Management Plan
MEMPC	Municipal Emergency Management Planning Committee
NSP-PLR	Neighbourhood Safer Places – Places of Last Resort
PEAR	Priority Egress/Access Roads
PPRR	Prevention, Preparedness, Response and Recovery
REMPC	Regional Emergency Management Planning Committee
VICSES	Victorian State Emergency Service
VBRC	Victoria Bushfire Royal Commission
VFRR	Victoria Fire Risk Register



For more information visit: www.moorabool.vic.gov.au